

# SOLUÇÕES DE TRATAMENTO DE FUNDAÇÕES DE VIADUTOS RECORRENDO A COLUNAS DE JET GROUTING

- Alexandre Pinto, *apinto@jetsj.pt*
- Rui Tomásio, *rtomasio@jetsj.pt*

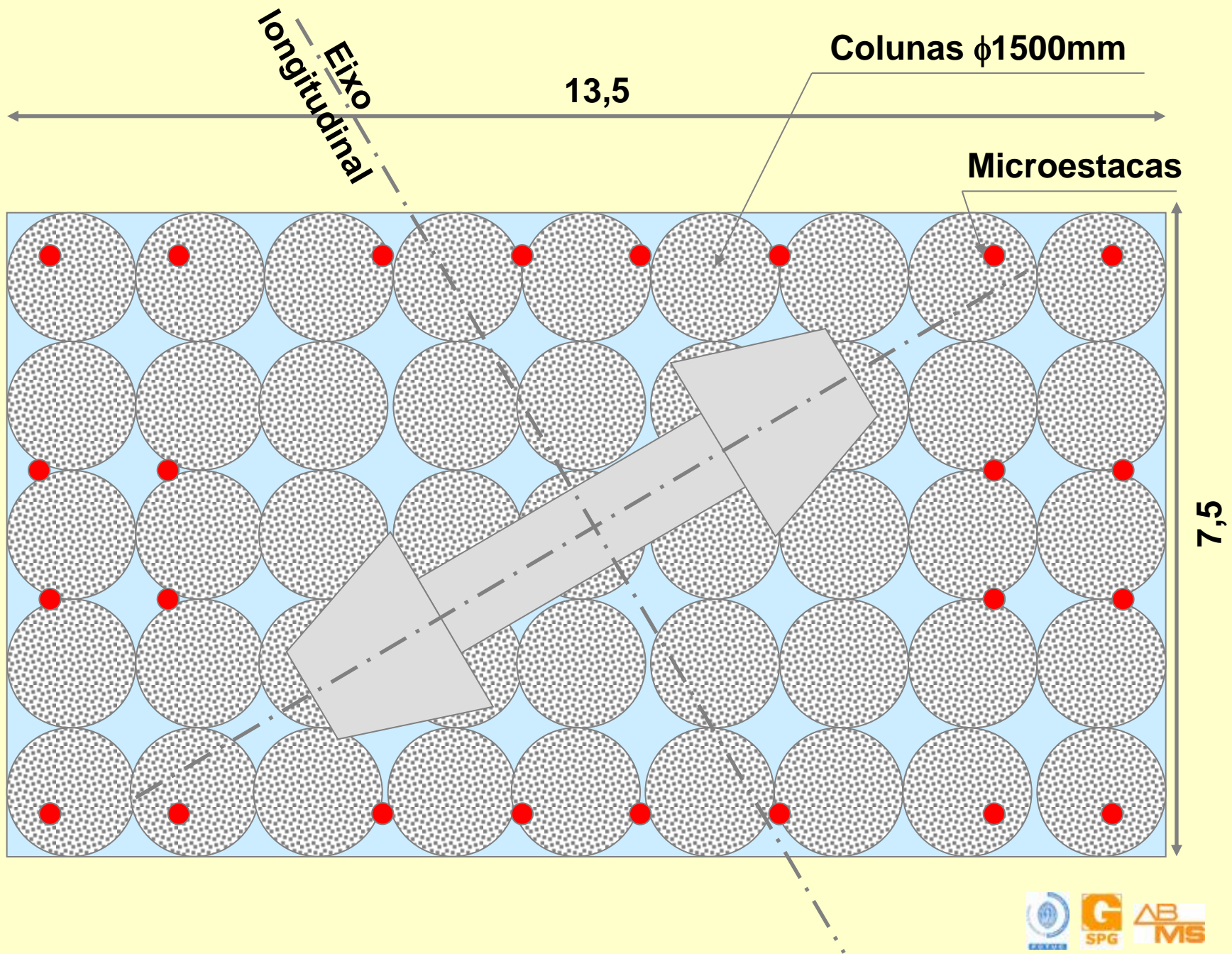
# ÍNDICE

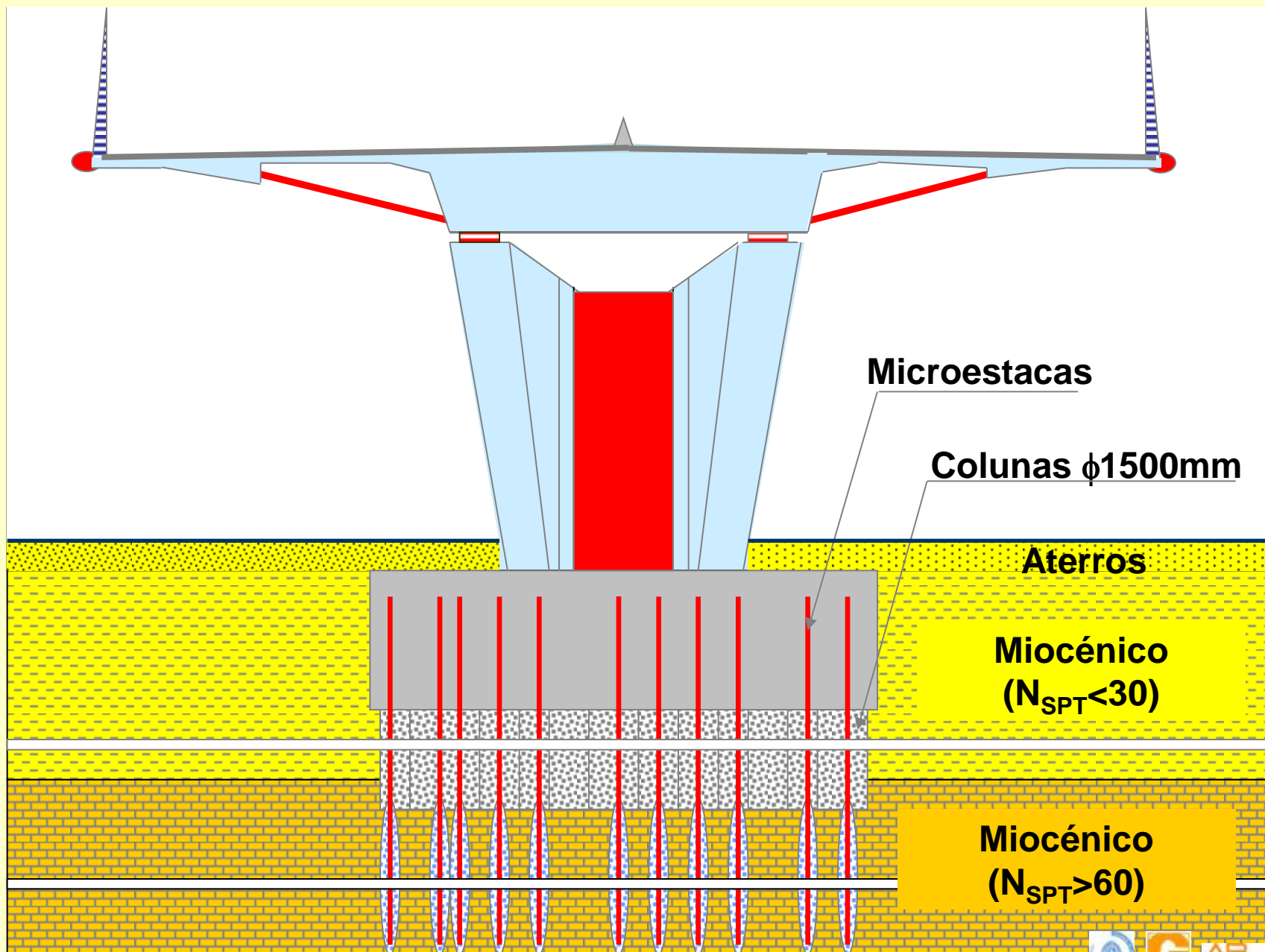
- Tratamento das Fundações do Viaduto do Eixo Norte – Sul sobre a Av. Padre Cruz – Lisboa
- Tratamento das Fundações do Viaduto sobre o Mondego - A17
- Reforço e Recalçamento das Estacas/Pilar do Viaduto sobre a Vala da Veia



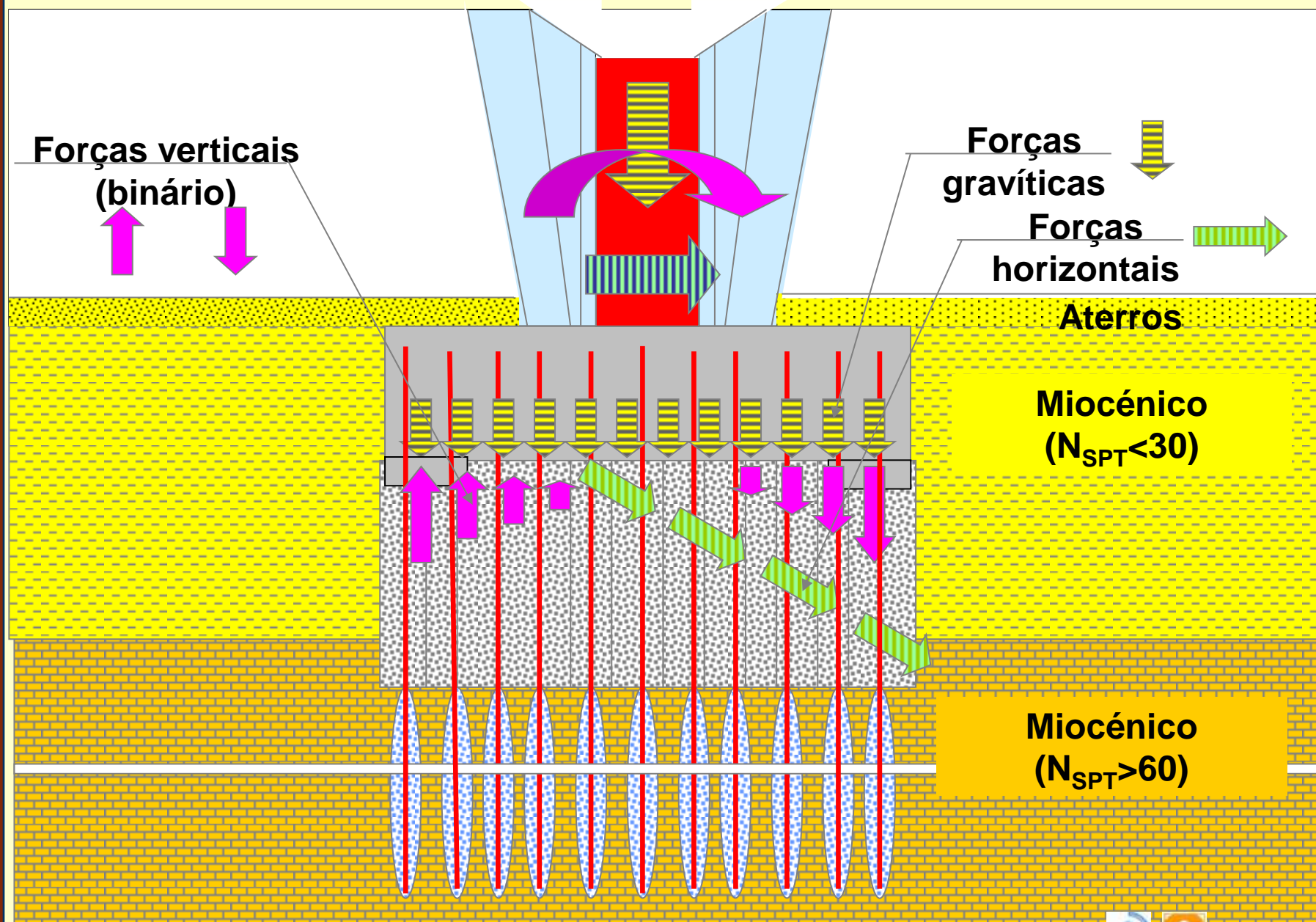














14 3 2007





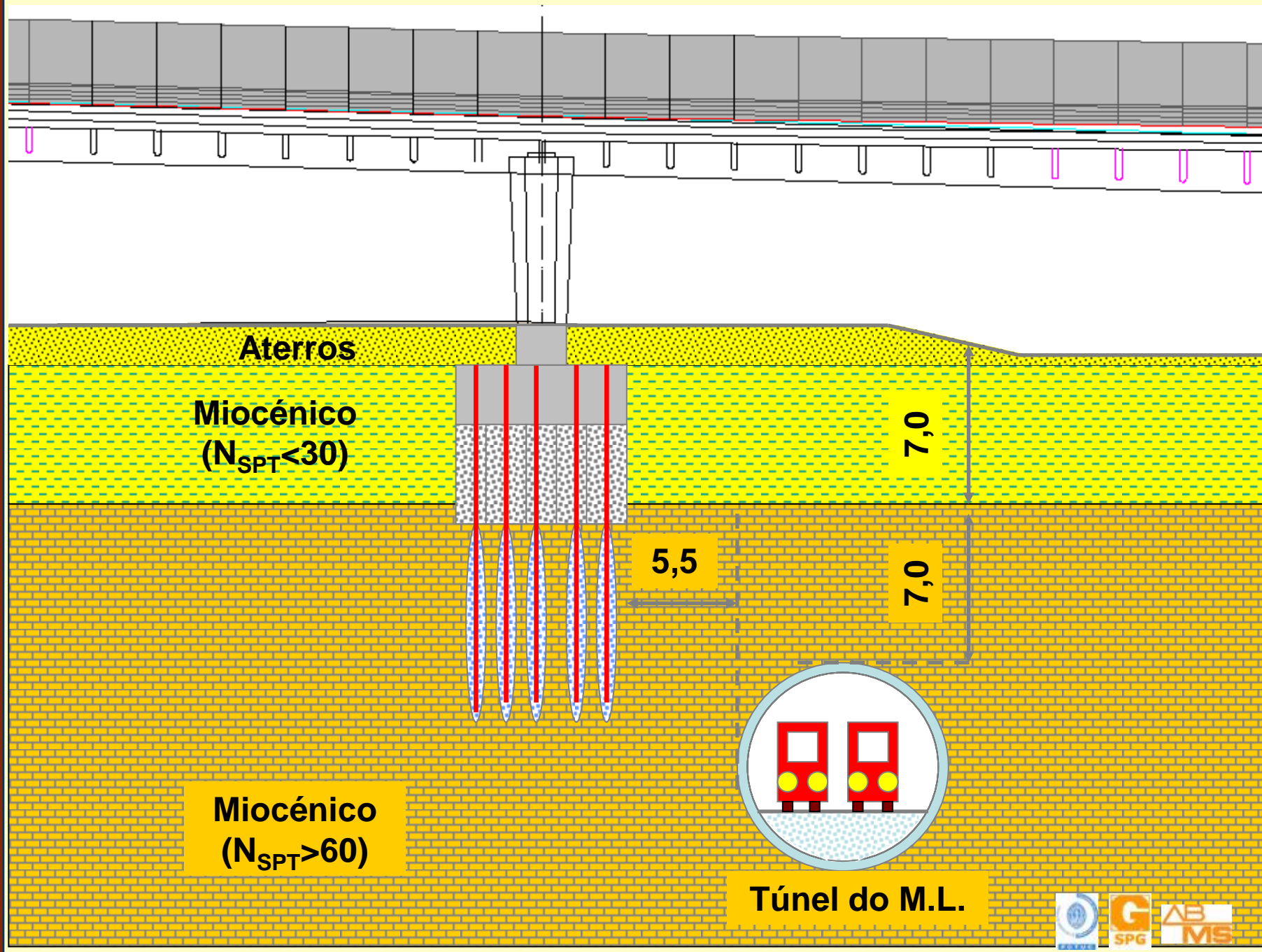




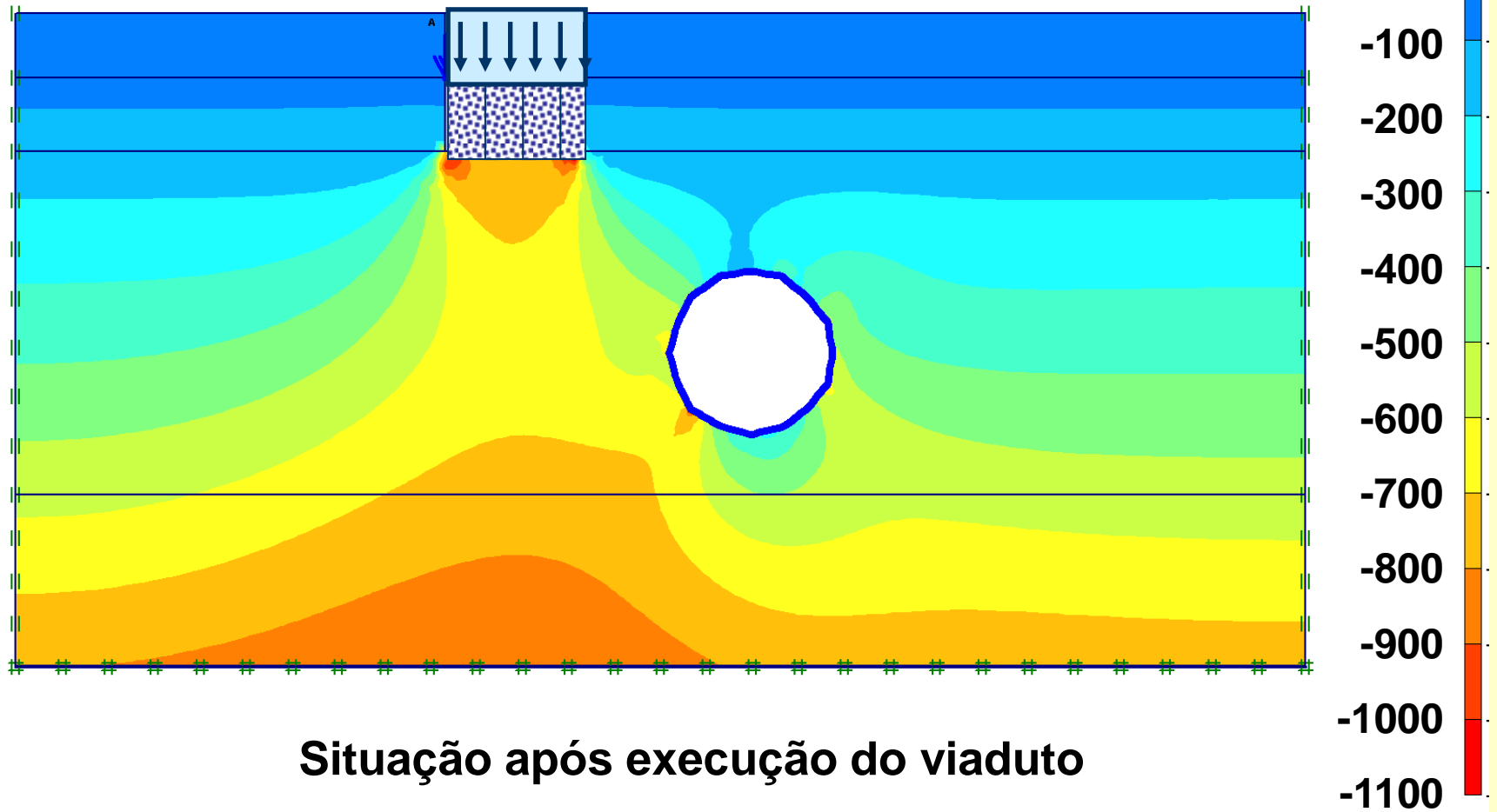


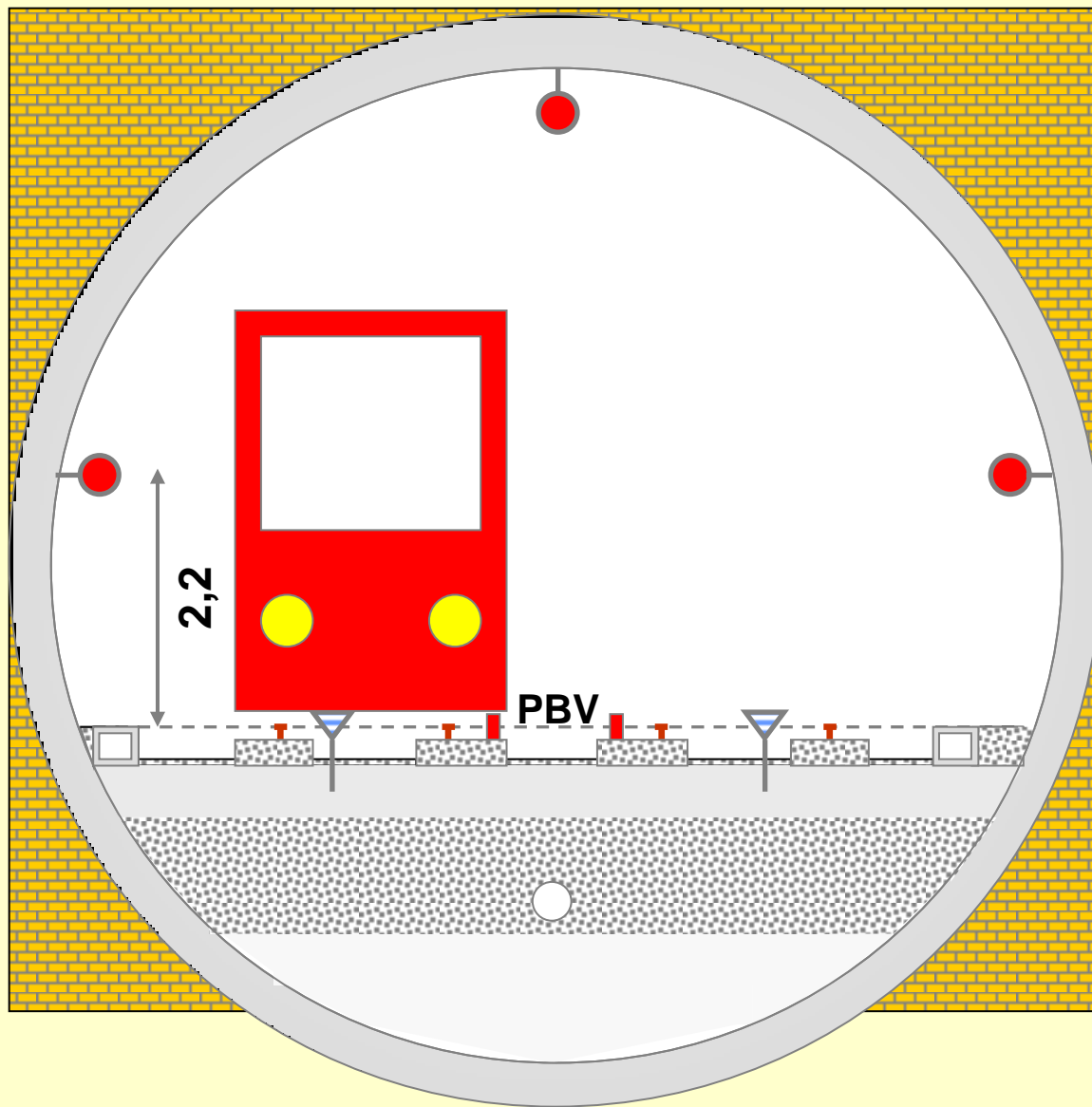






## Distribuição de tensões no solo após execução do viaduto





## Instrumentação do Túnel da Linha Amarela do Metropolitano de Lisboa – Secção Tipo

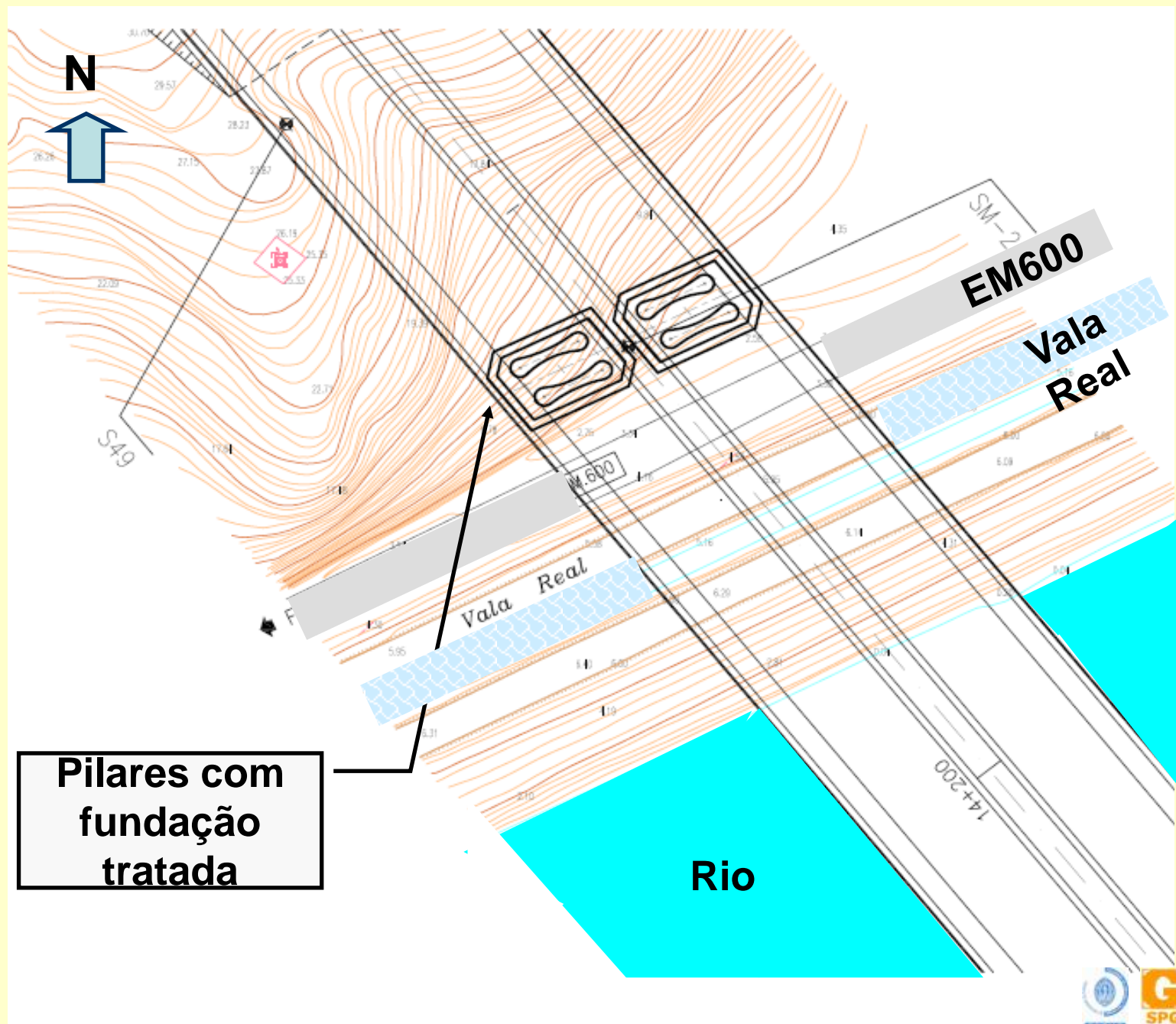
● Alvos topográficos – prismas de reflexão total, para medição de convergência

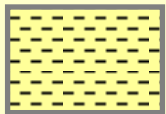
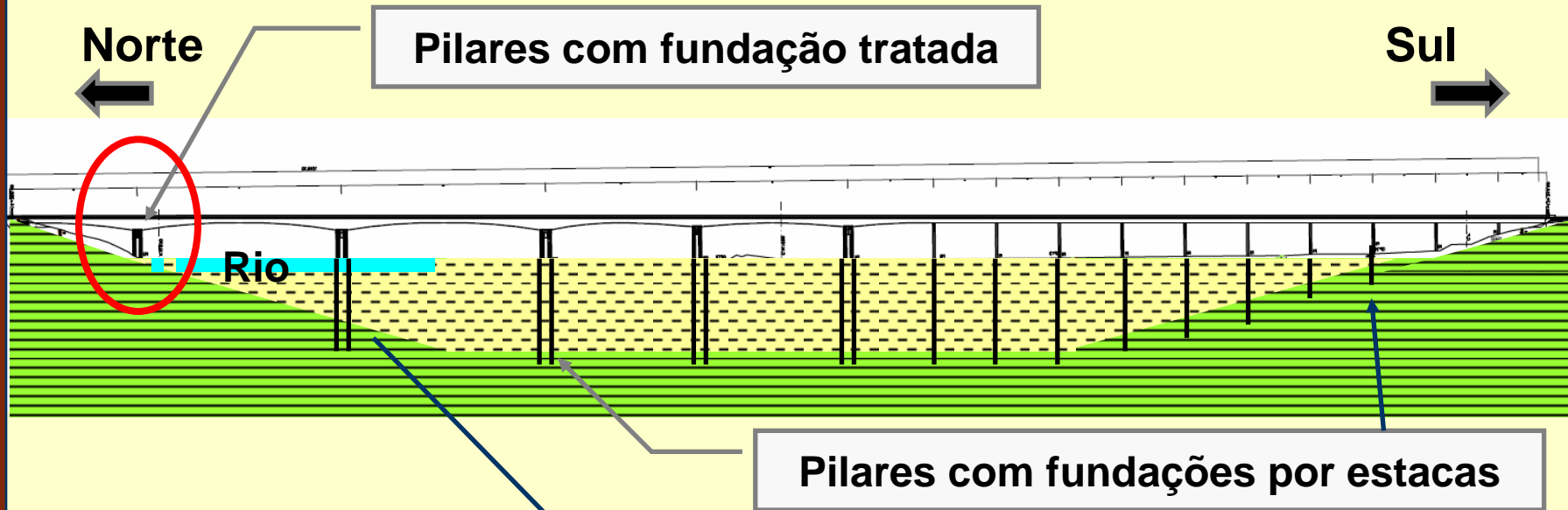
▼ Marcas topográficas, para medição assentamentos na via



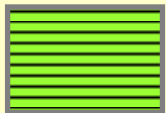








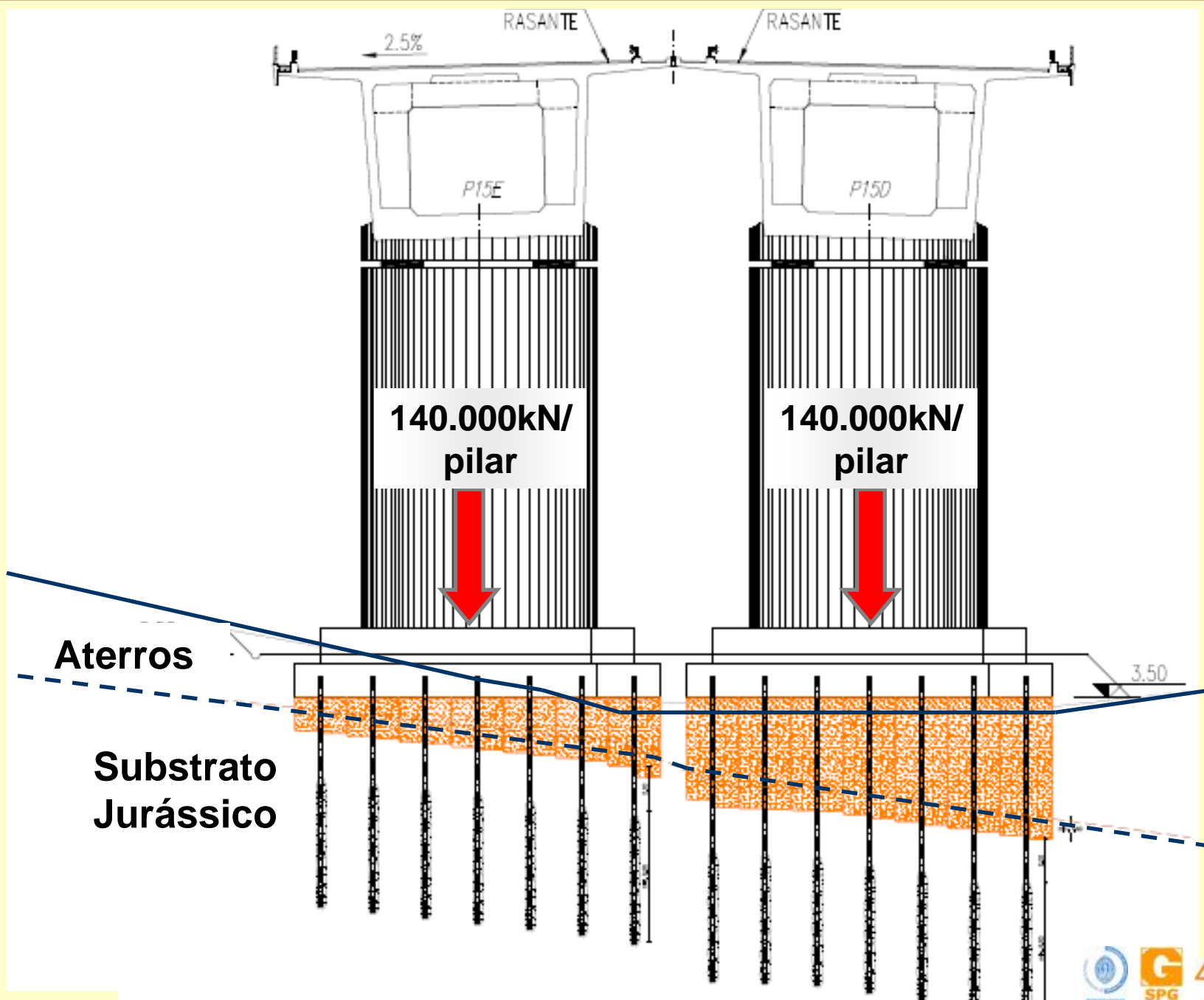
**Quaternário**

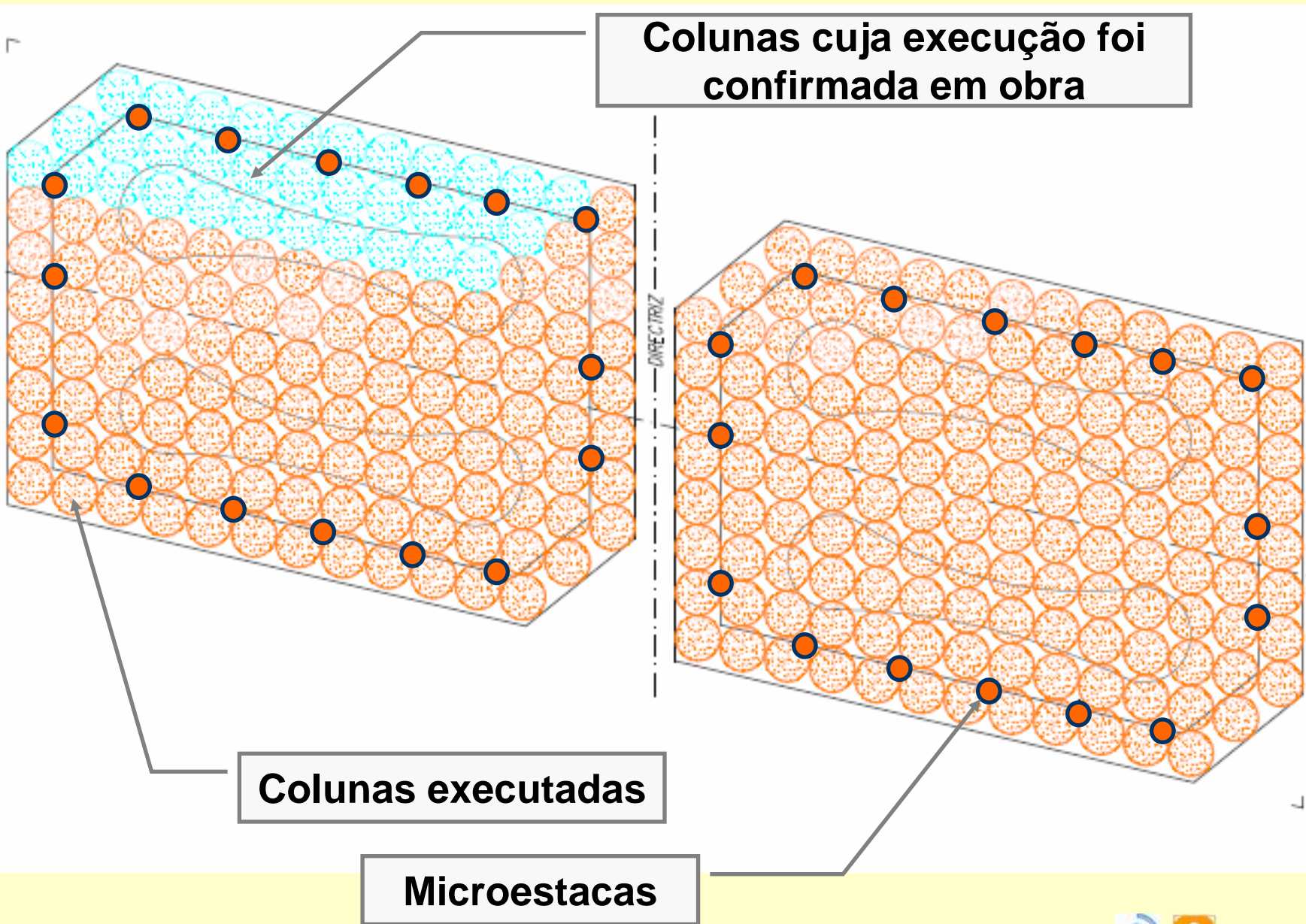


**Jurássico**



















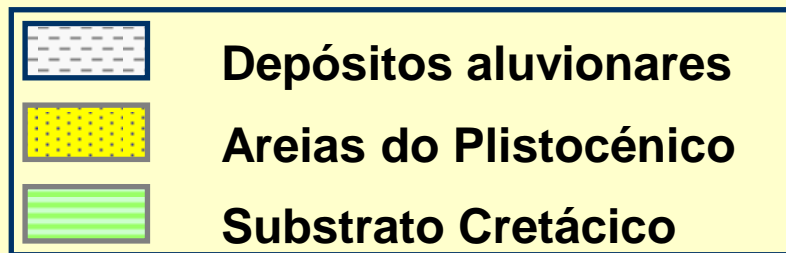
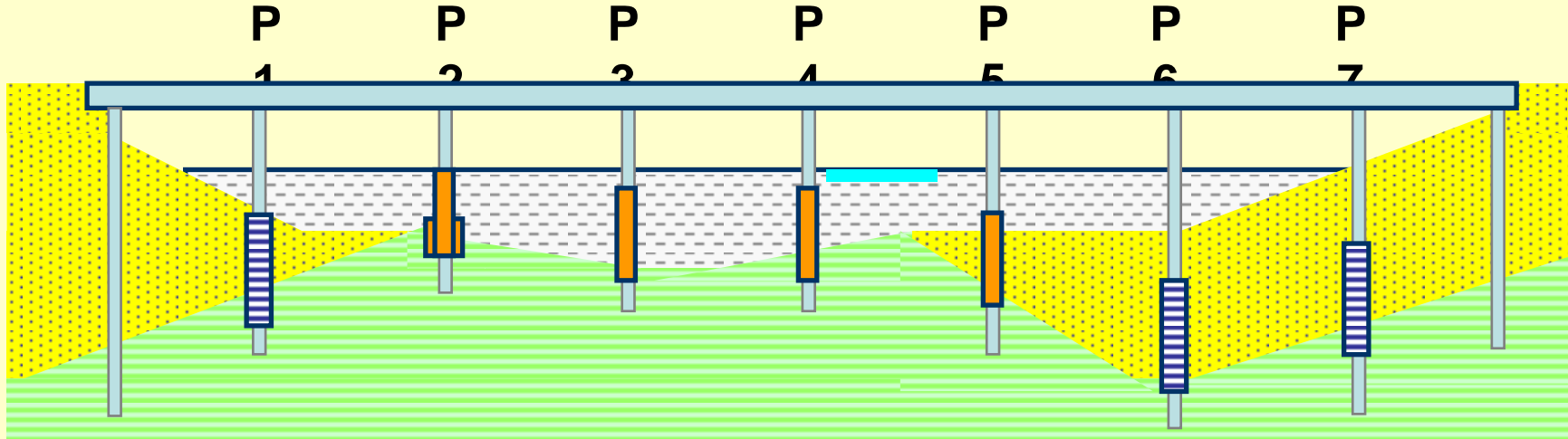






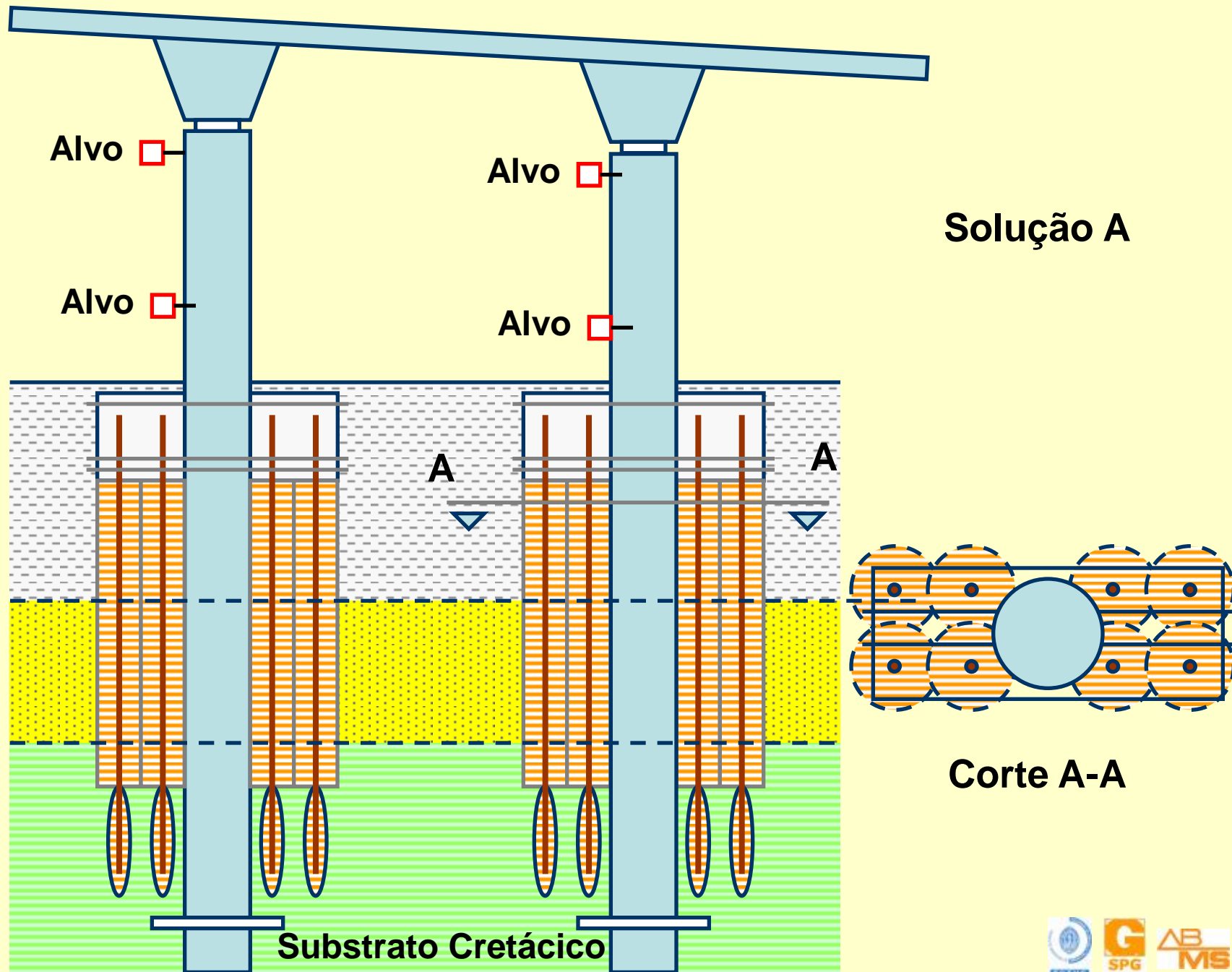


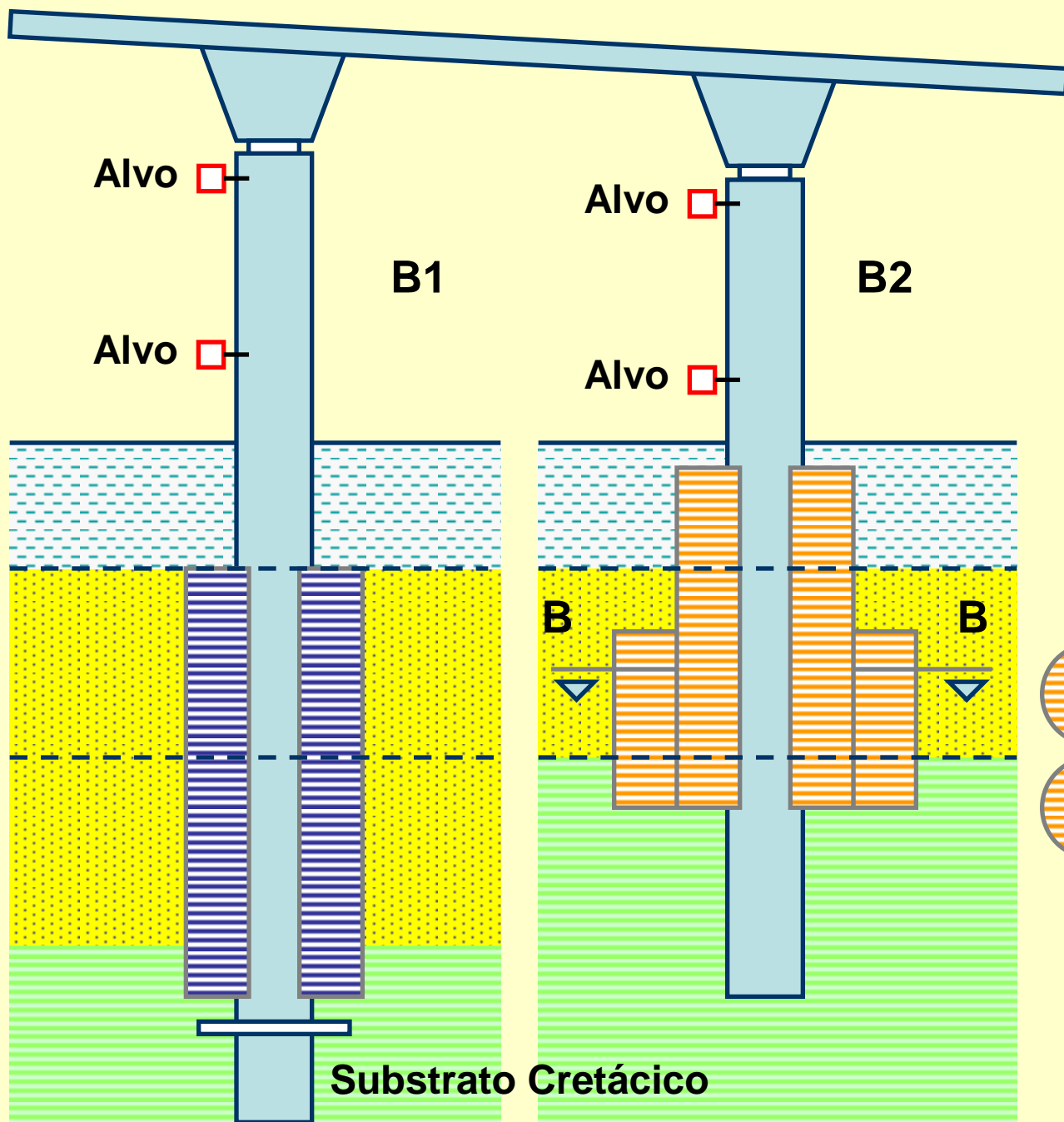
## Perfil Longitudinal Sobreelevado 1:2,5



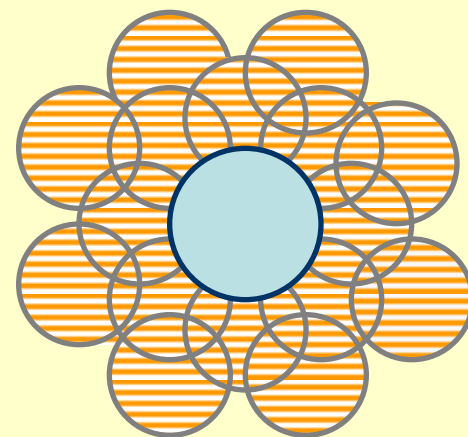
Colunas  $\phi 1500\text{mm}$ , para atender a desvios de verticalidade

Colunas  $\phi 1200\text{mm}$



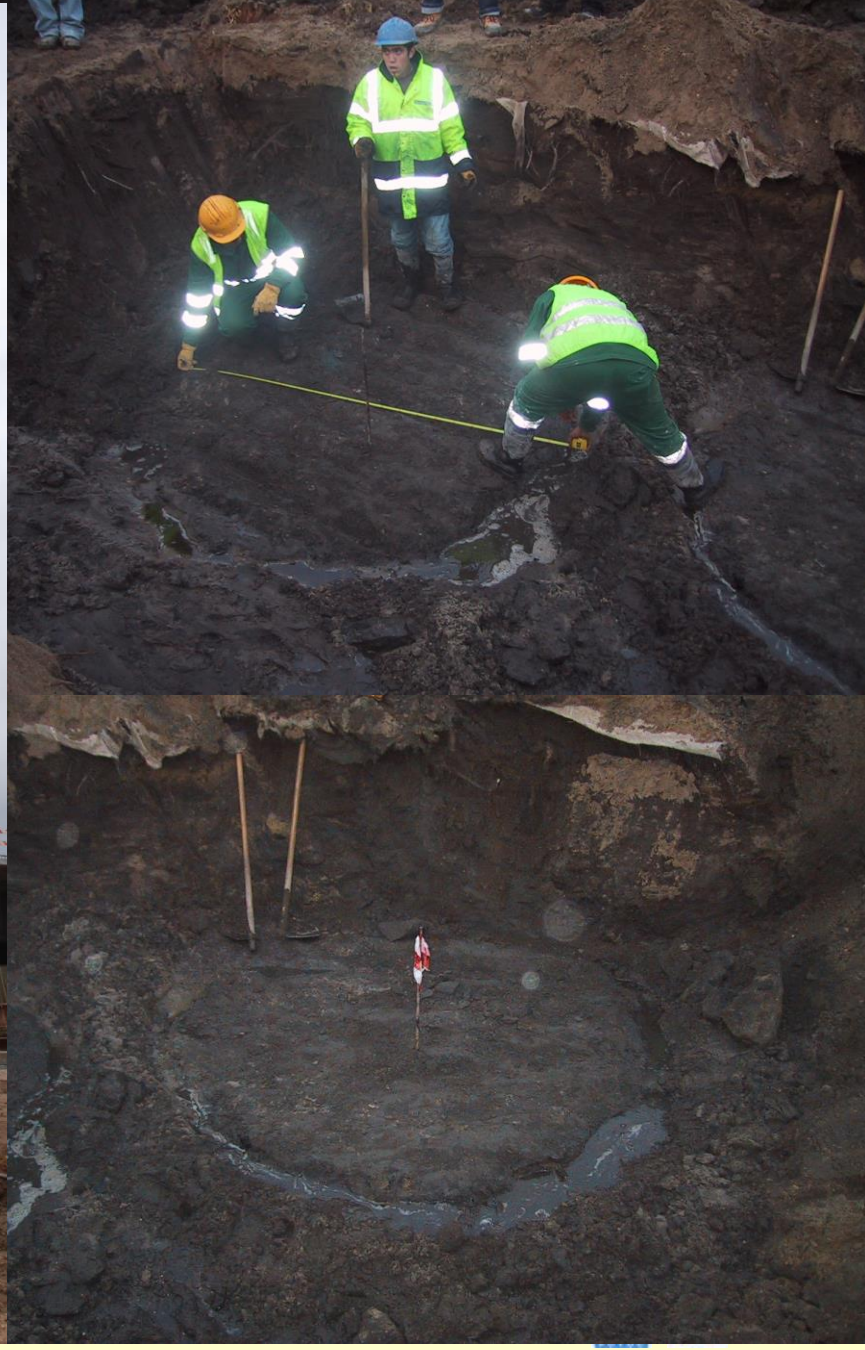


**Solução B**



**Corte B-B**

























**MUITO OBRIGADO PELA VOSSA ATENÇÃO!**