



Ground Improvement Solutions for the new Cruise Terminal in Lisbon

Alexandre Pinto, apinto@jetsj.pt

Rui Tomásio, rotomasio@jetsj.pt

João Ravasco, jmravasco@somague.pt

Session S7 – Biogrout & Other Grouting Methods, 1st June 2012



OUTLINE

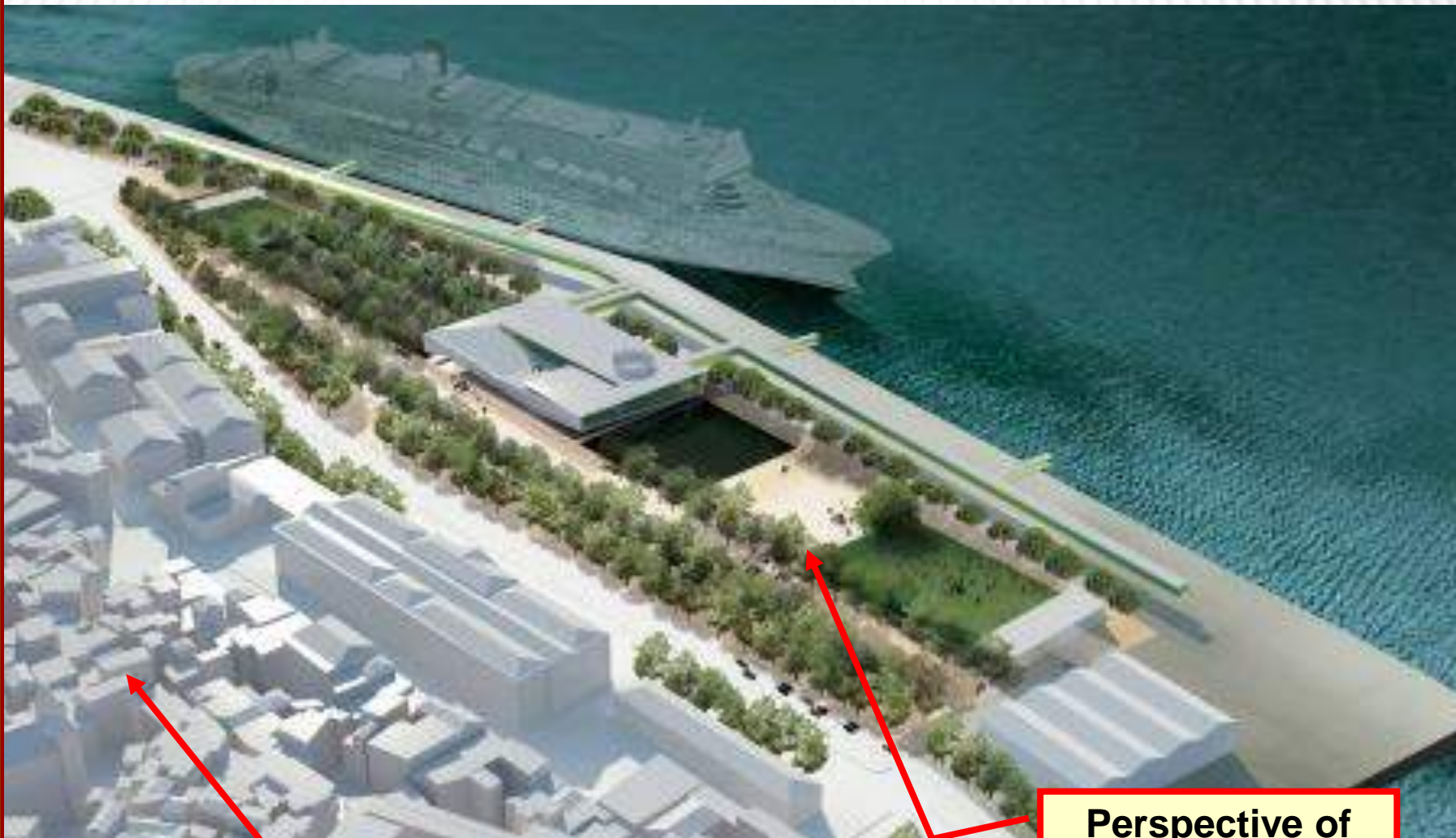
- ☐ **Introduction**
- ☐ Main constraints
- ☐ Quay walls refurbishment and underpinning
- ☐ Landfill foundations
- ☐ Design
- ☐ Monitoring and survey
- ☐ Quality control / quality assurance
- ☐ Alternative solutions
- ☐ Conclusion remarks





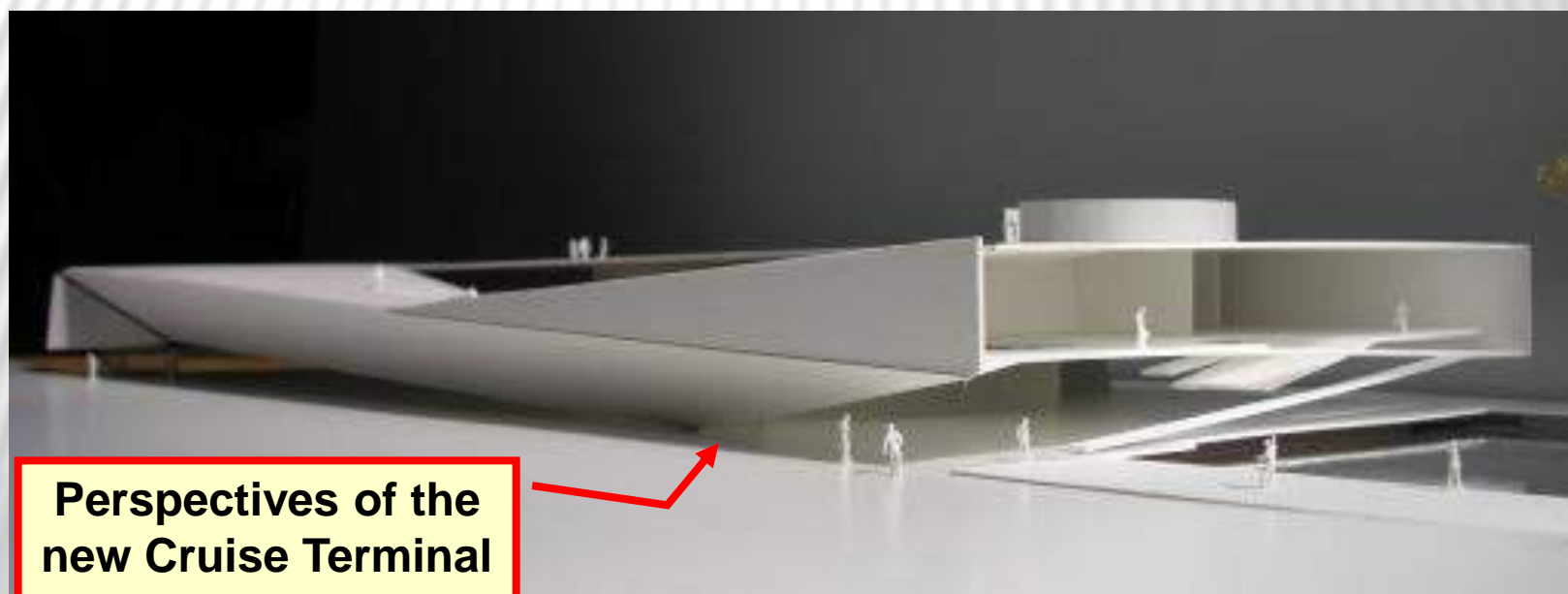
**Existent quay
wall to be close
and refurbished**

**Dockyard on
high tide before
the filling works**

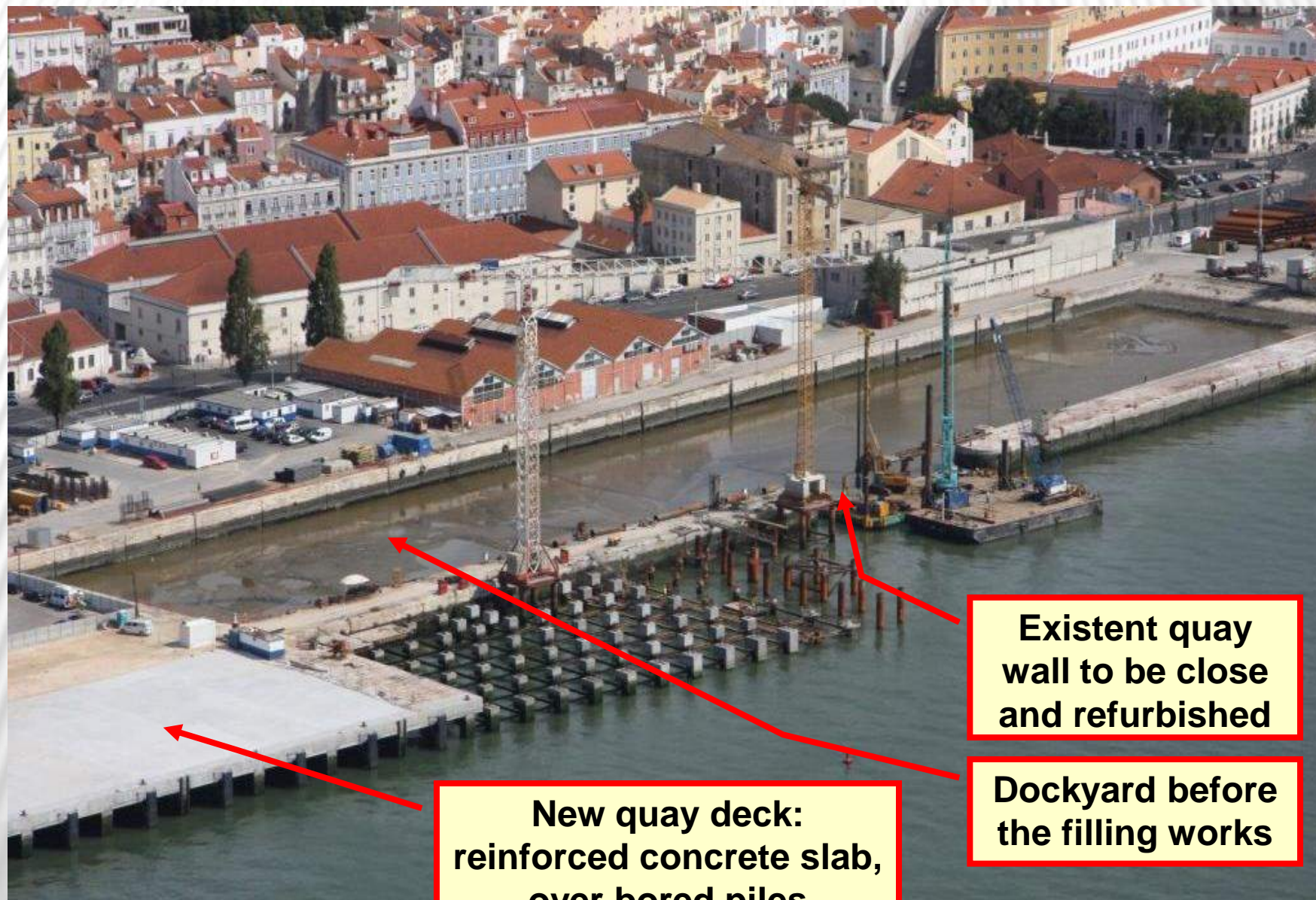
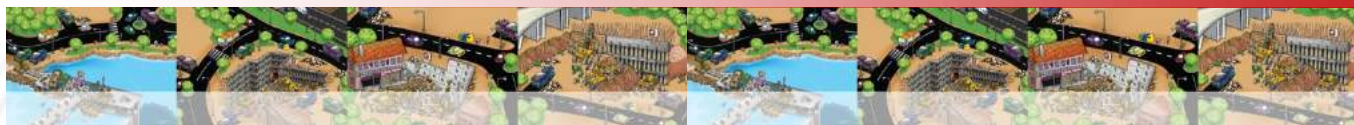


Alfama Hill

Perspective of
the new Cruise
Terminal



**Perspectives of the
new Cruise Terminal**



**Existent quay
wall to be close
and refurbished**

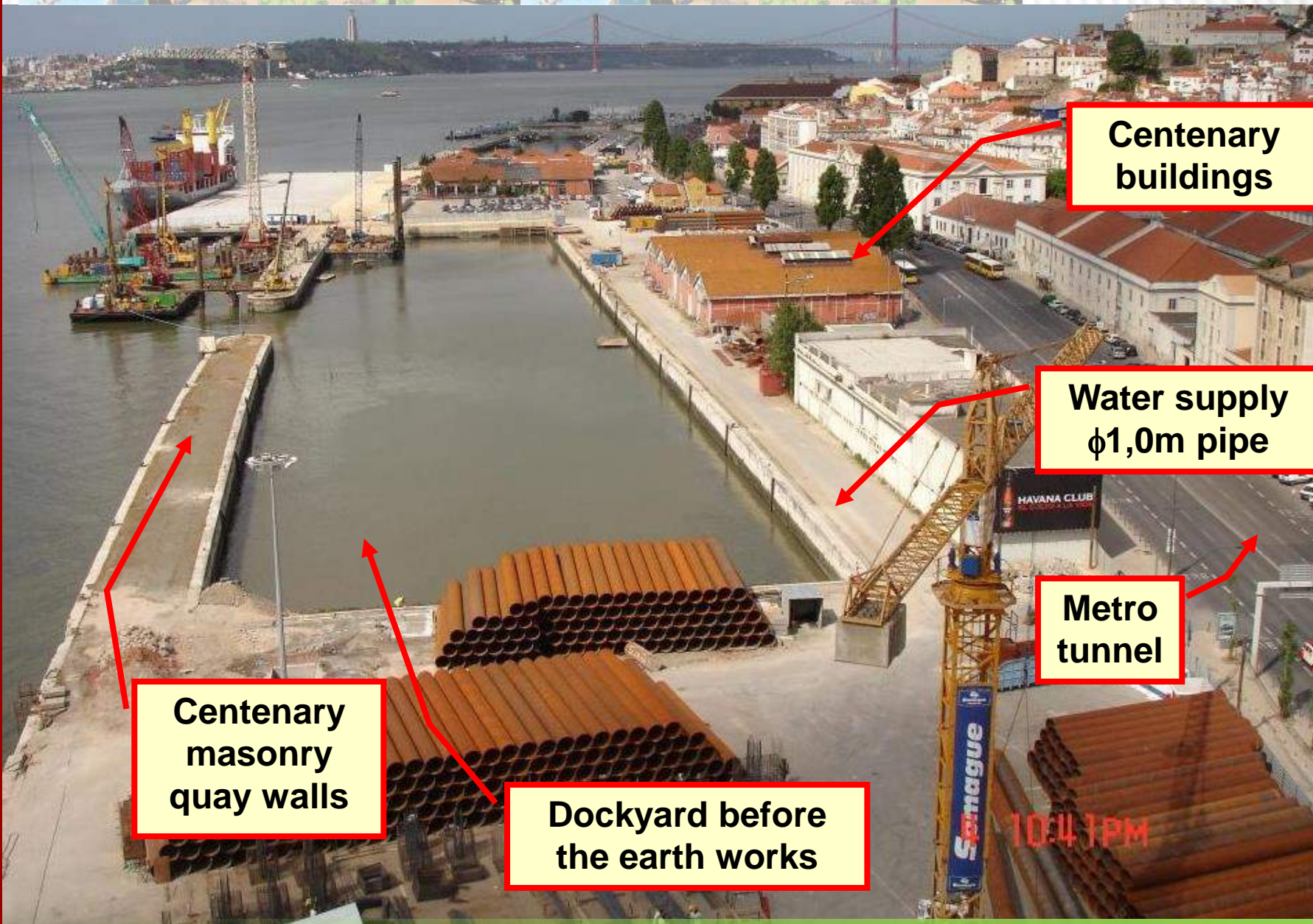
**New quay deck:
reinforced concrete slab,
over bored piles**

**Dockyard before
the filling works**



OUTLINE

- ☐ Introduction
- ☐ **Main constraints**
- ☐ Quay walls refurbishment and underpinning
- ☐ Landfill foundations
- ☐ Design
- ☐ Monitoring and survey
- ☐ Quality control / quality assurance
- ☐ Alternative solutions
- ☐ Conclusion remarks



**Centenary
buildings**

**Water supply
φ1,0m pipe**

**Metro
tunnel**

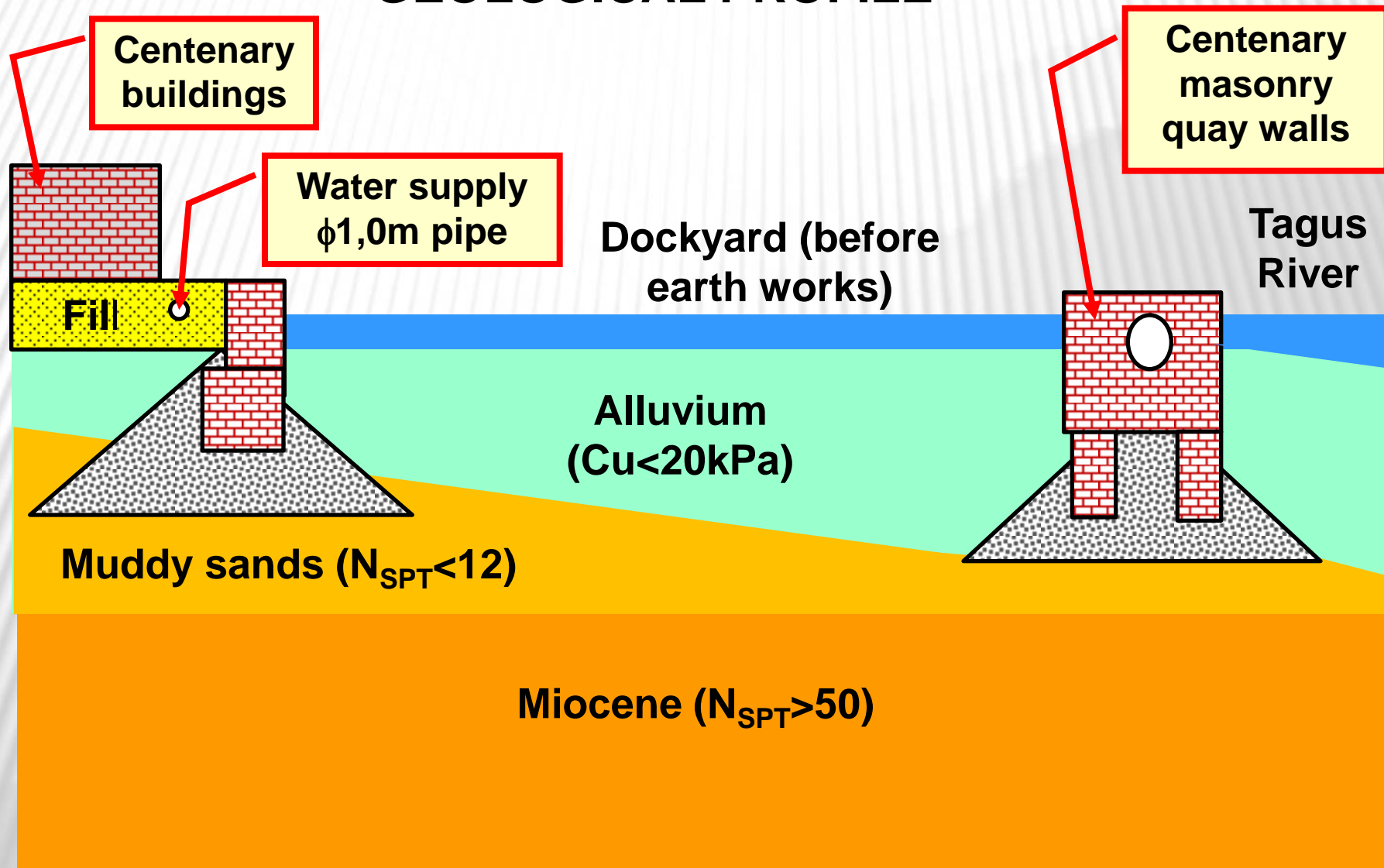
**Centenary
masonry
quay walls**

**Dockyard before
the earth works**

10:41 PM



GEOLOGICAL PROFILE





**Earth works in
difficult conditions**

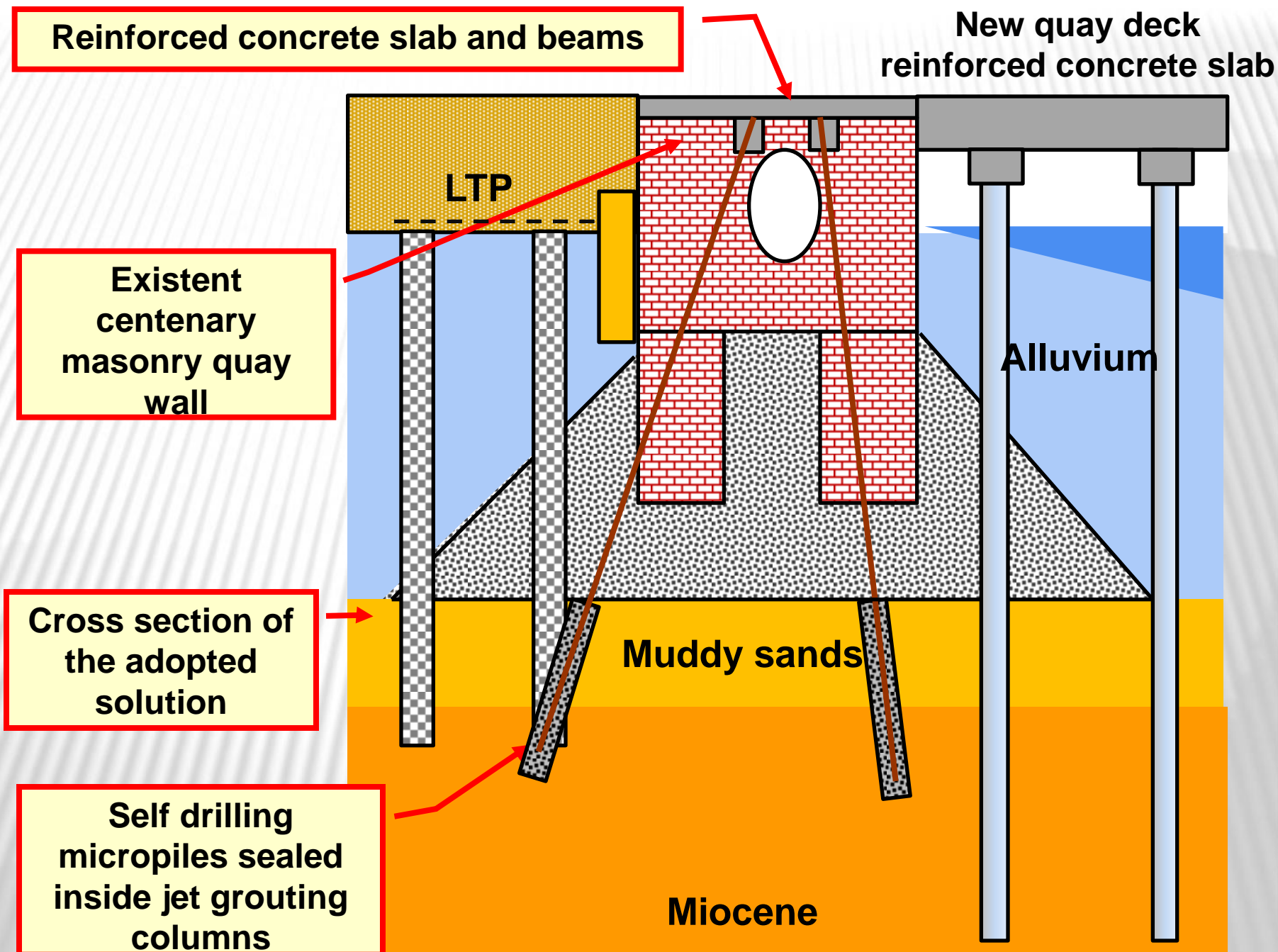


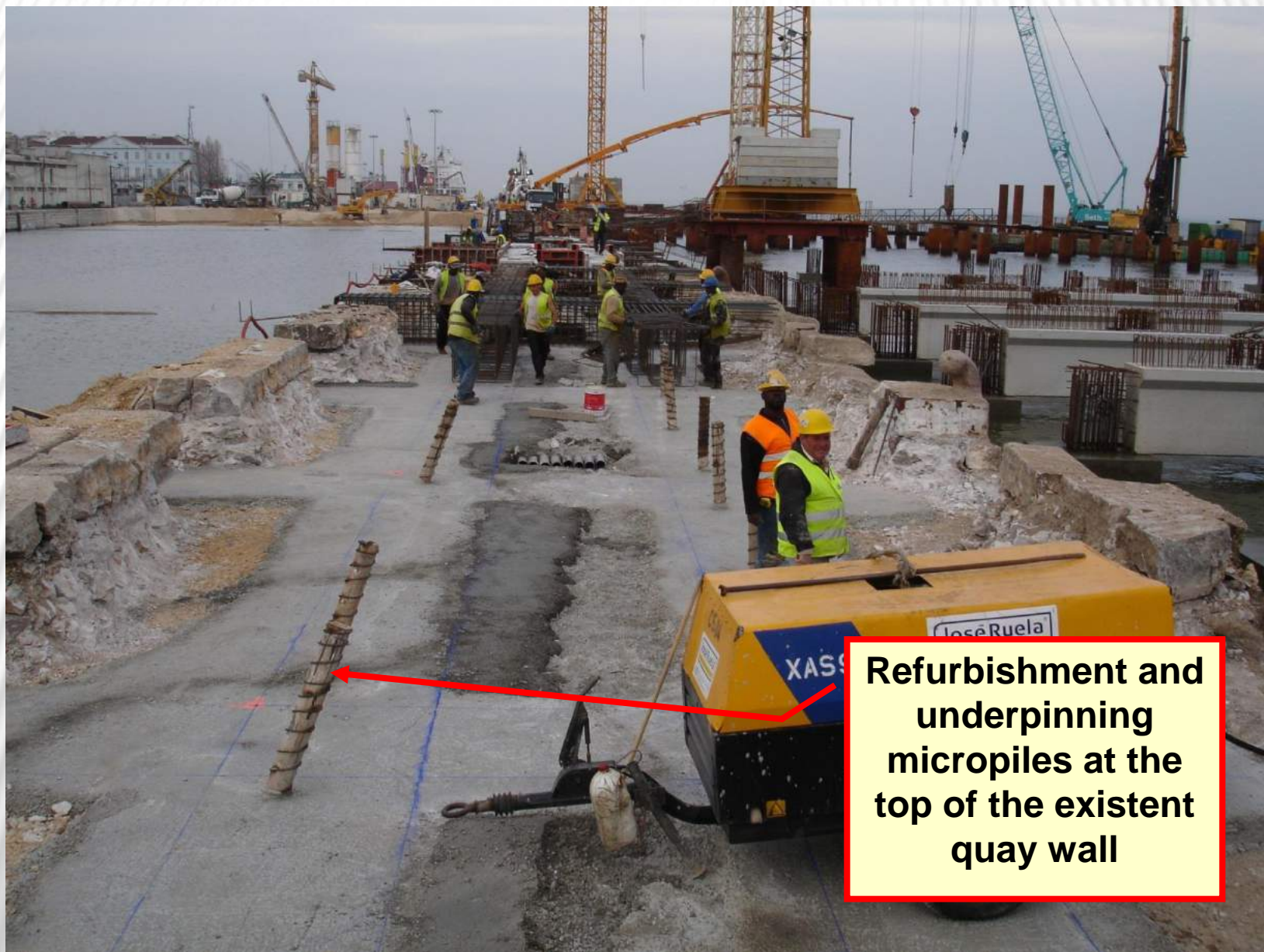
Jet grouting works in difficult conditions



OUTLINE

- ☐ Introduction
- ☐ Main constraints
- ☐ **Quay walls refurbishment and underpinning**
- ☐ Landfill foundations
- ☐ Design
- ☐ Monitoring and survey
- ☐ Quality control / quality assurance
- ☐ Alternative solutions
- ☐ Conclusion remarks



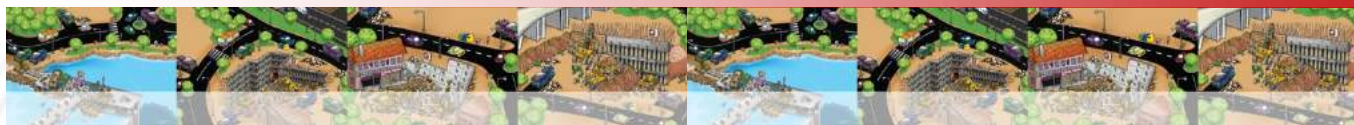


Refurbishment and underpinning micropiles at the top of the existent quay wall



Quay wall
refurbishment
and underpinning
beams





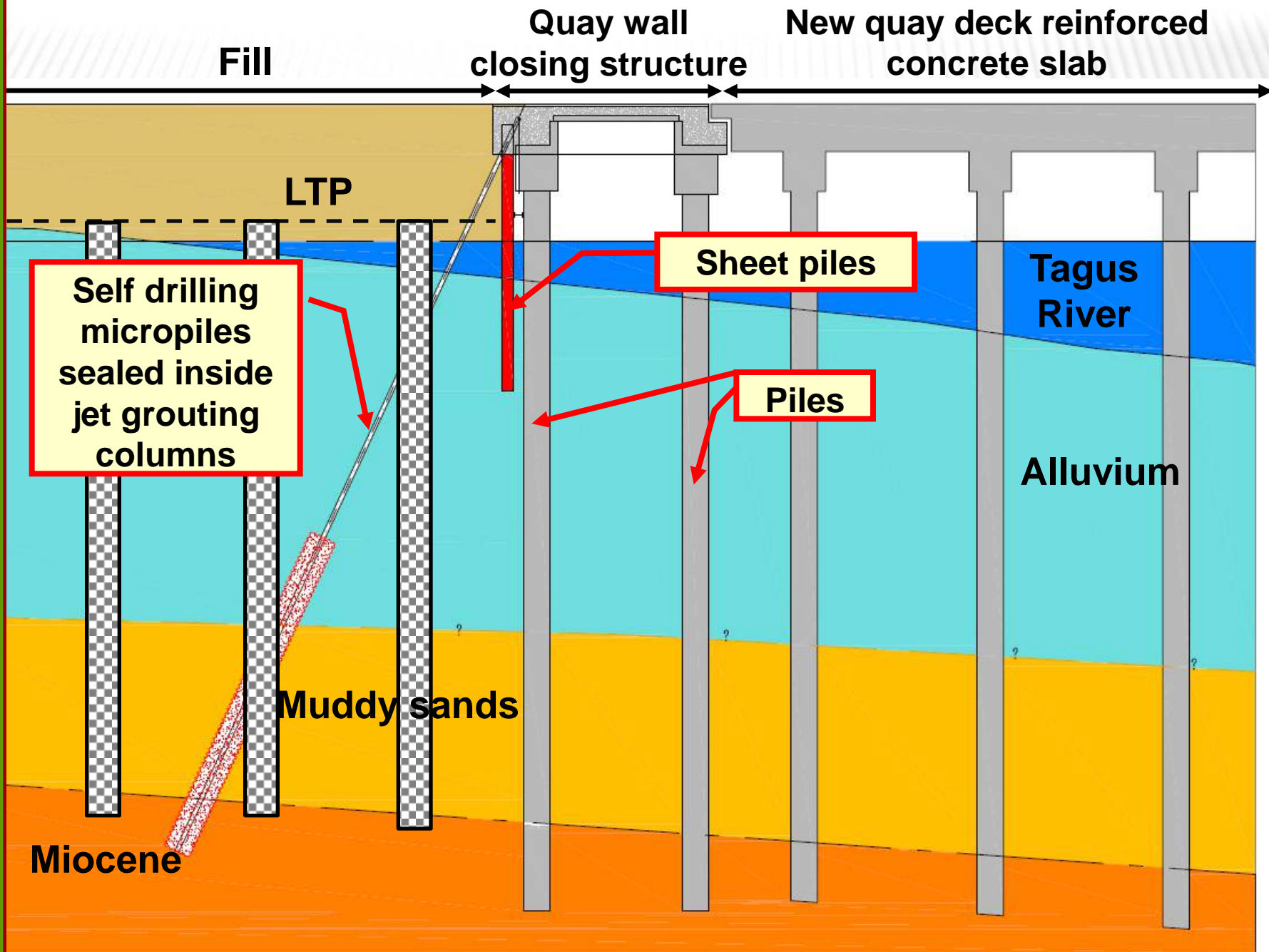
Quay wall
refurbishment
and underpinning
beams

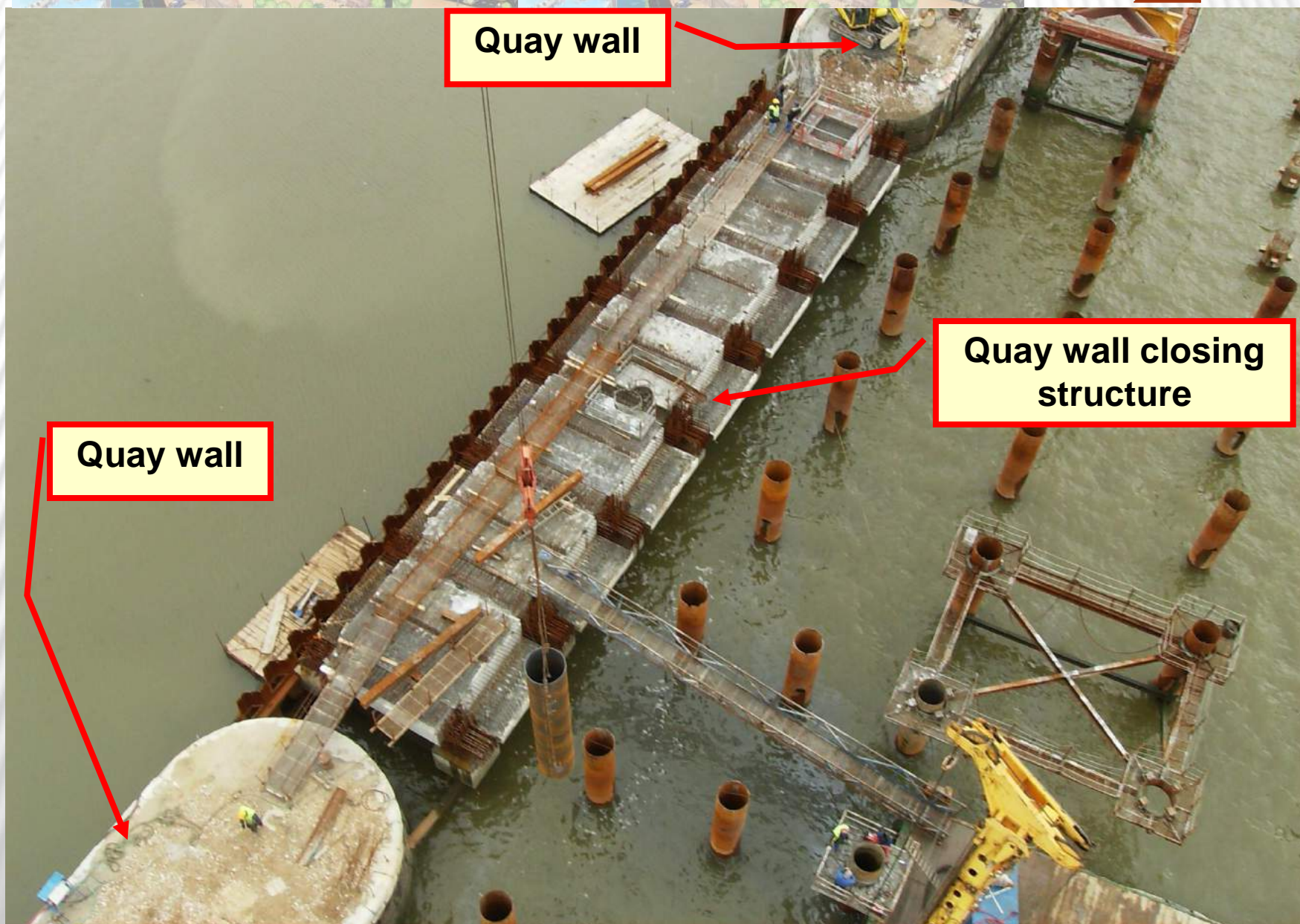


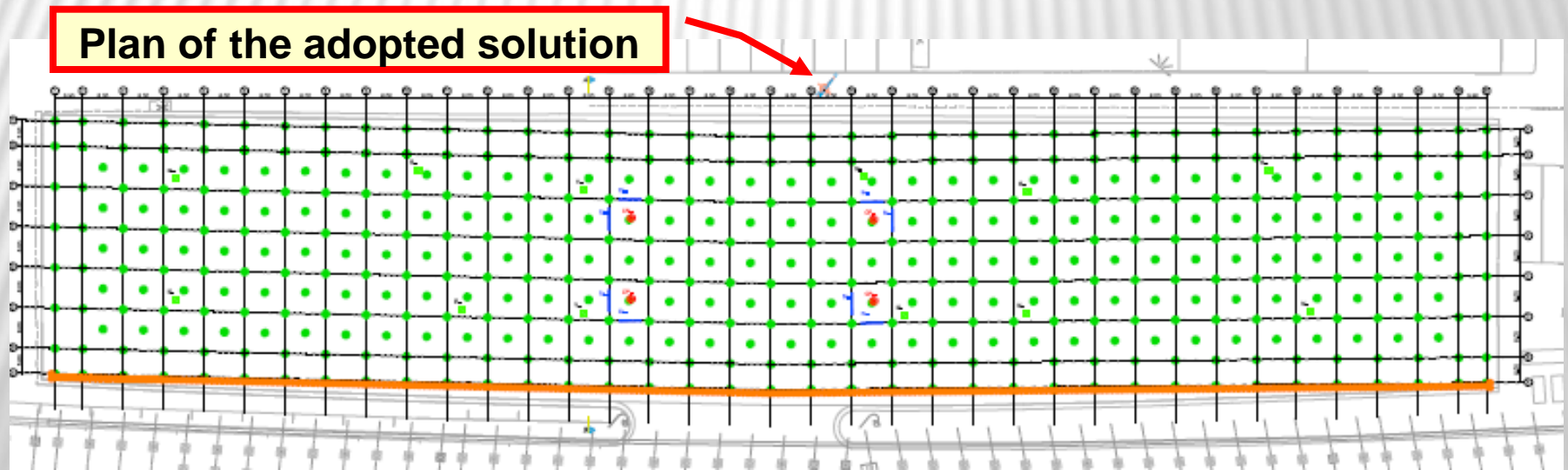
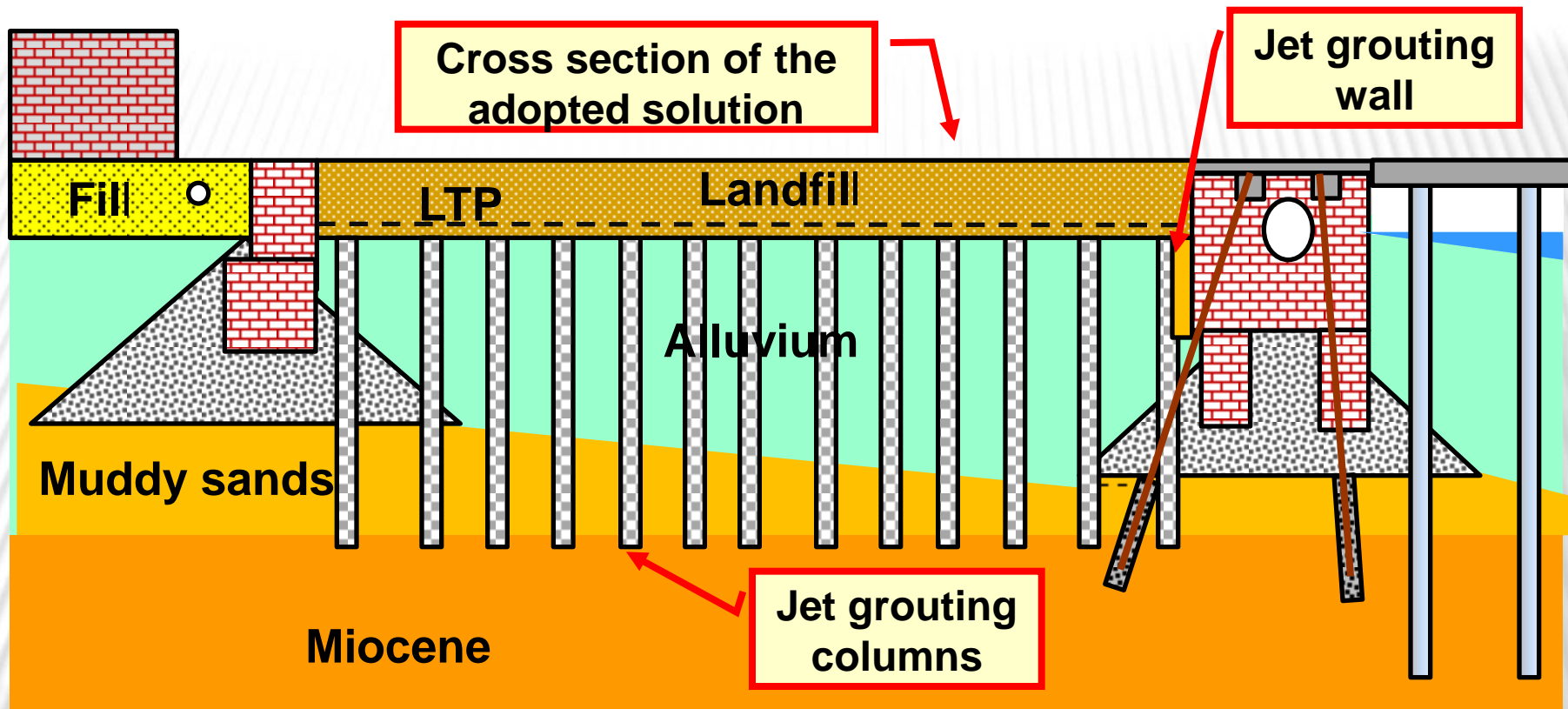


OUTLINE

- ☐ Introduction
- ☐ Main constraints
- ☐ Quay walls refurbishment and underpinning
- ☐ **Landfill foundations**
- ☐ Design
- ☐ Monitoring and survey
- ☐ Quality control / quality assurance
- ☐ Alternative solutions
- ☐ Conclusion remarks





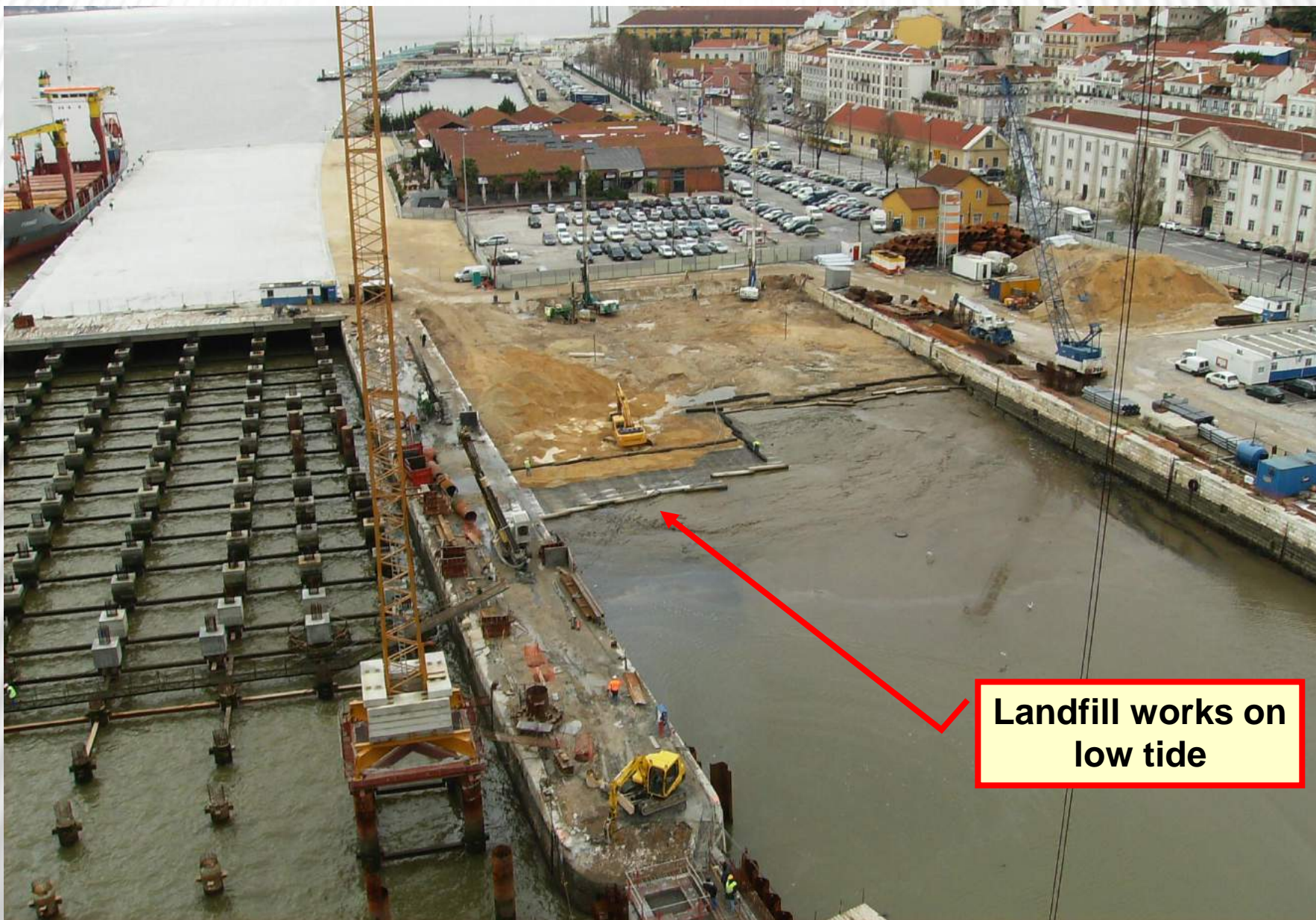




Installation of geogrids



Installation of geogrids



**Landfill works on
low tide**



Landfill works on low tide



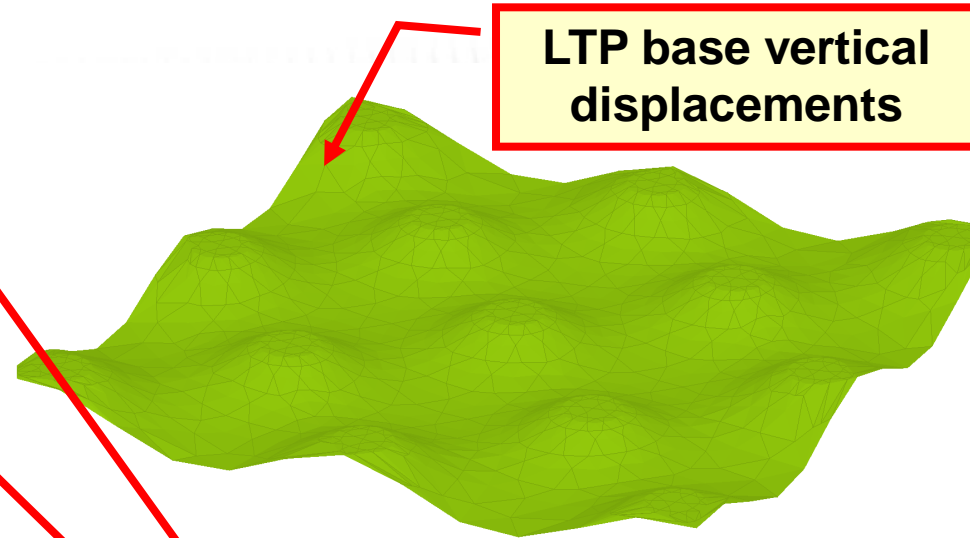
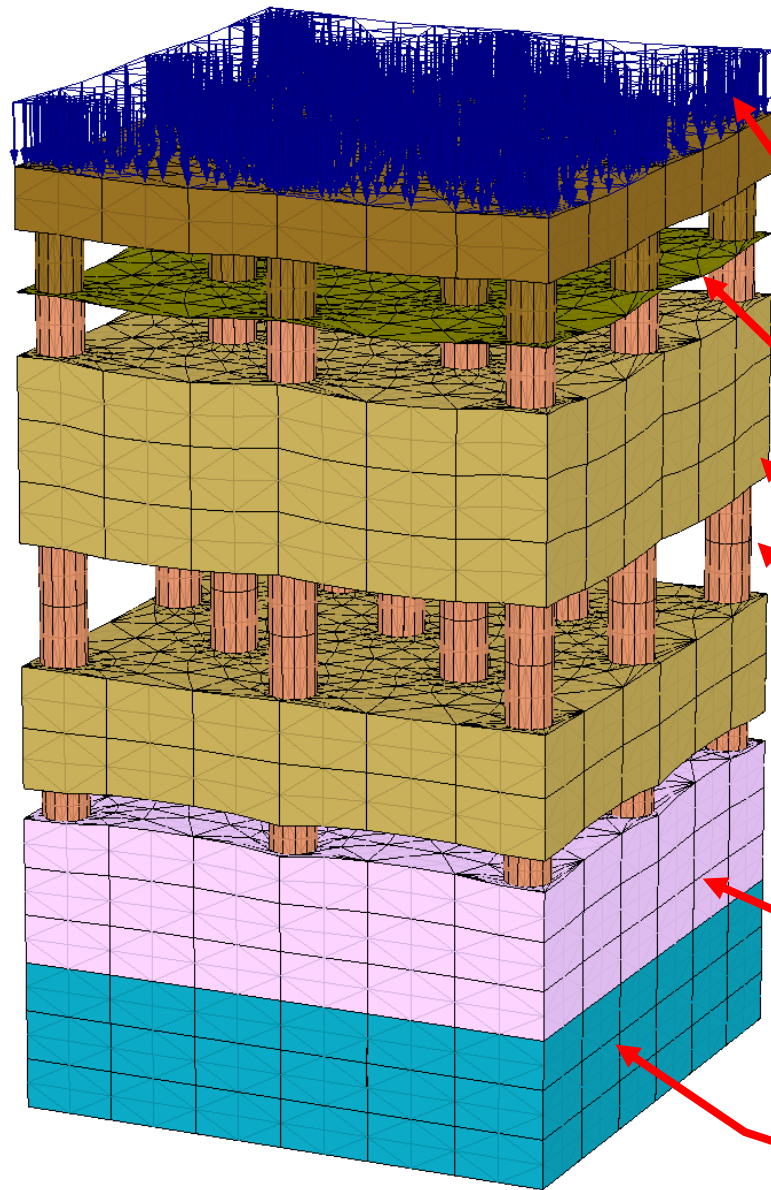
**Landfill works
after conclusion**



OUTLINE

- ☐ Introduction
- ☐ Main constraints
- ☐ Quay walls refurbishment and underpinning
- ☐ Landfill foundations
- ☐ **Design**
- ☐ Monitoring and survey
- ☐ Quality control / quality assurance
- ☐ Alternative solutions
- ☐ Conclusion remarks

3D FEM MODEL



LTP base vertical displacements

Loads at the surface

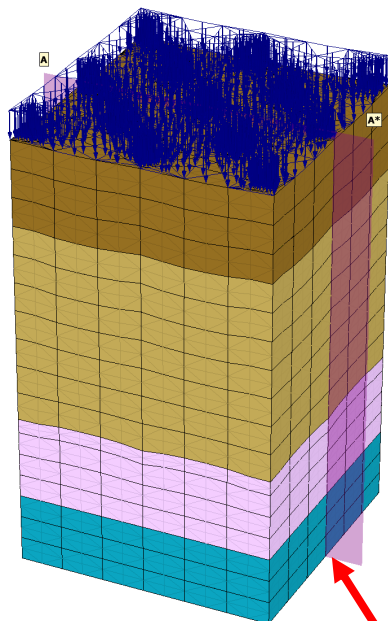
LTP

Muddy alluvium

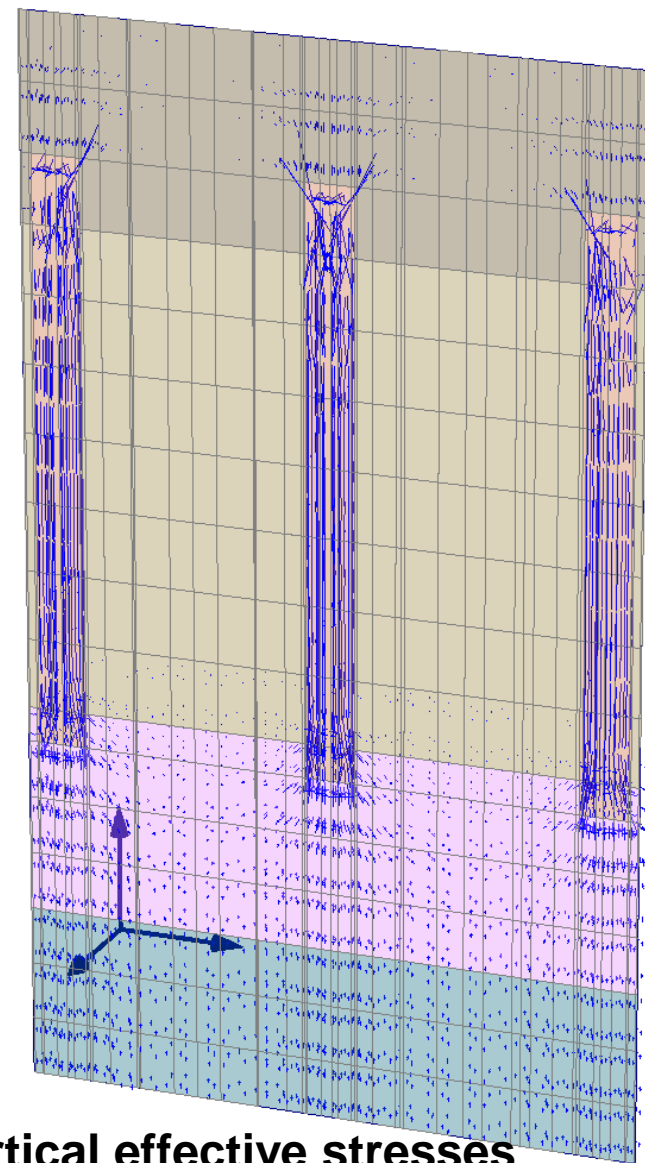
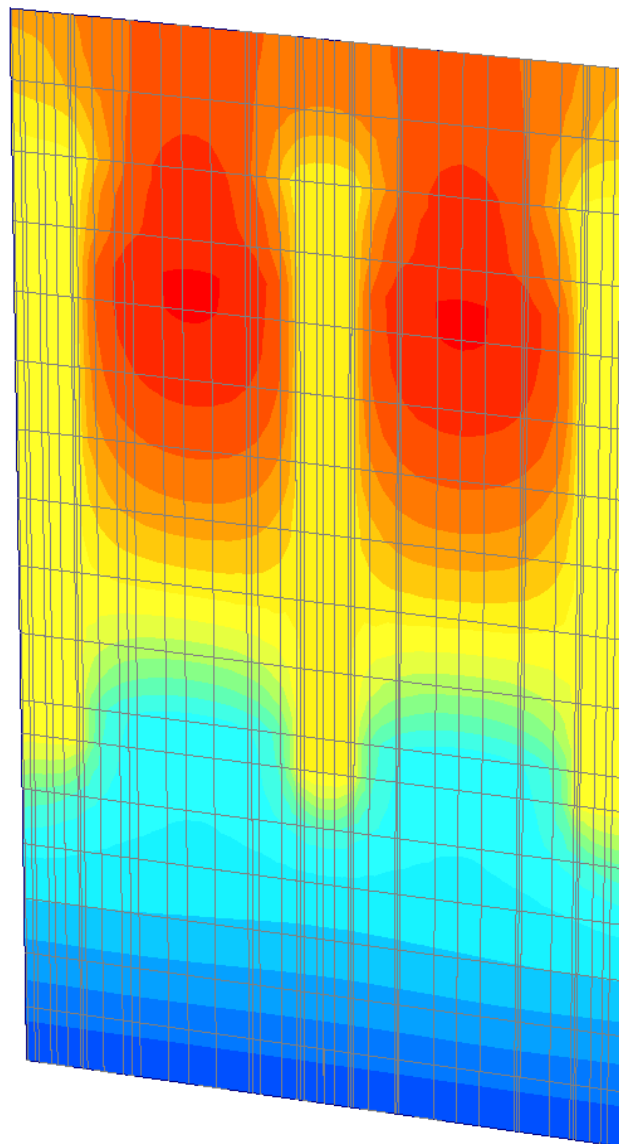
Jet grouting columns

Sandy alluvium

Miocene: dense sand and sandstone



Plan where the results were obtained



Vertical displacements: max 76mm

Vertical effective stresses



OUTLINE

- ☐ Introduction
- ☐ Main constraints
- ☐ Quay walls refurbishment and underpinning
- ☐ Landfill foundations
- ☐ Design
- ☐ **Monitoring and survey**
- ☐ Quality control / quality assurance
- ☐ Alternative solutions
- ☐ Conclusion remarks

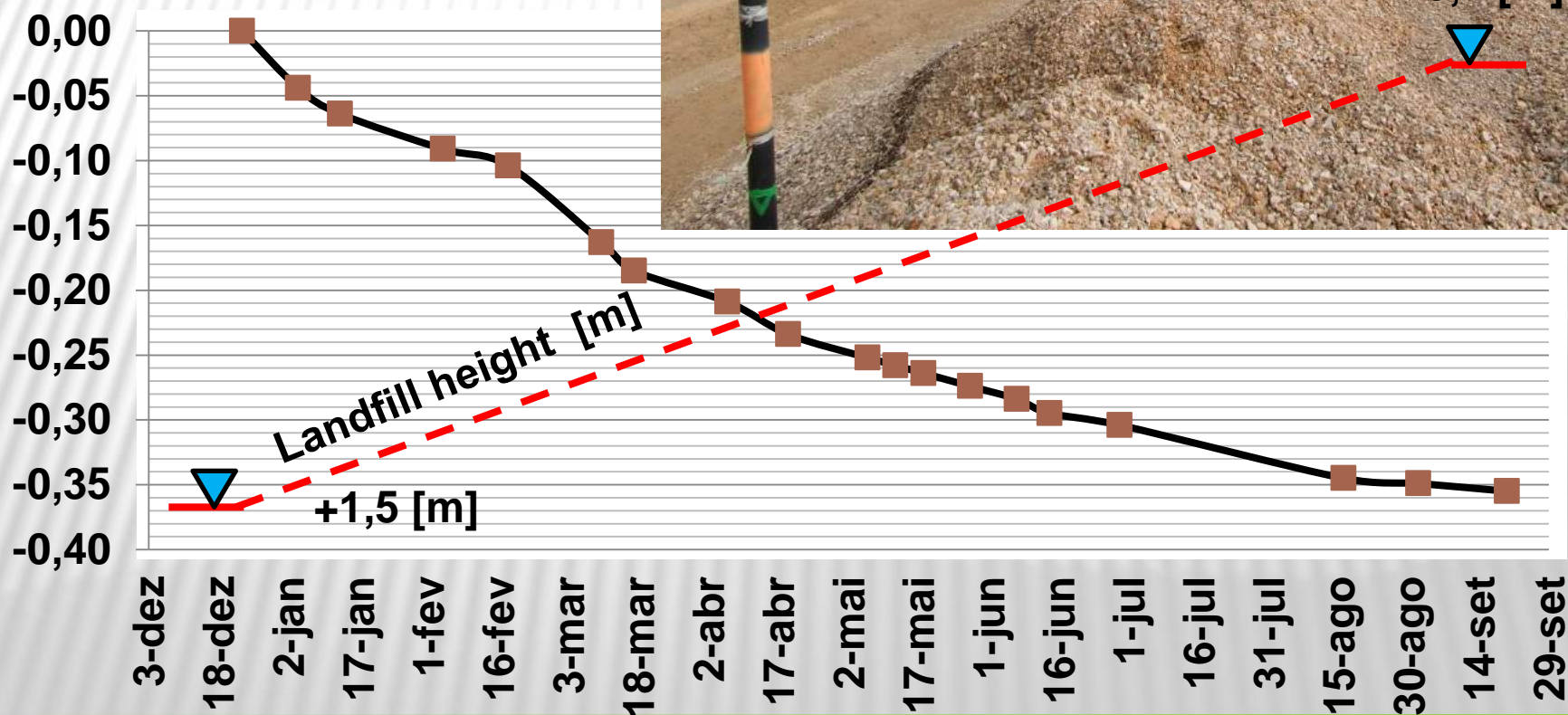


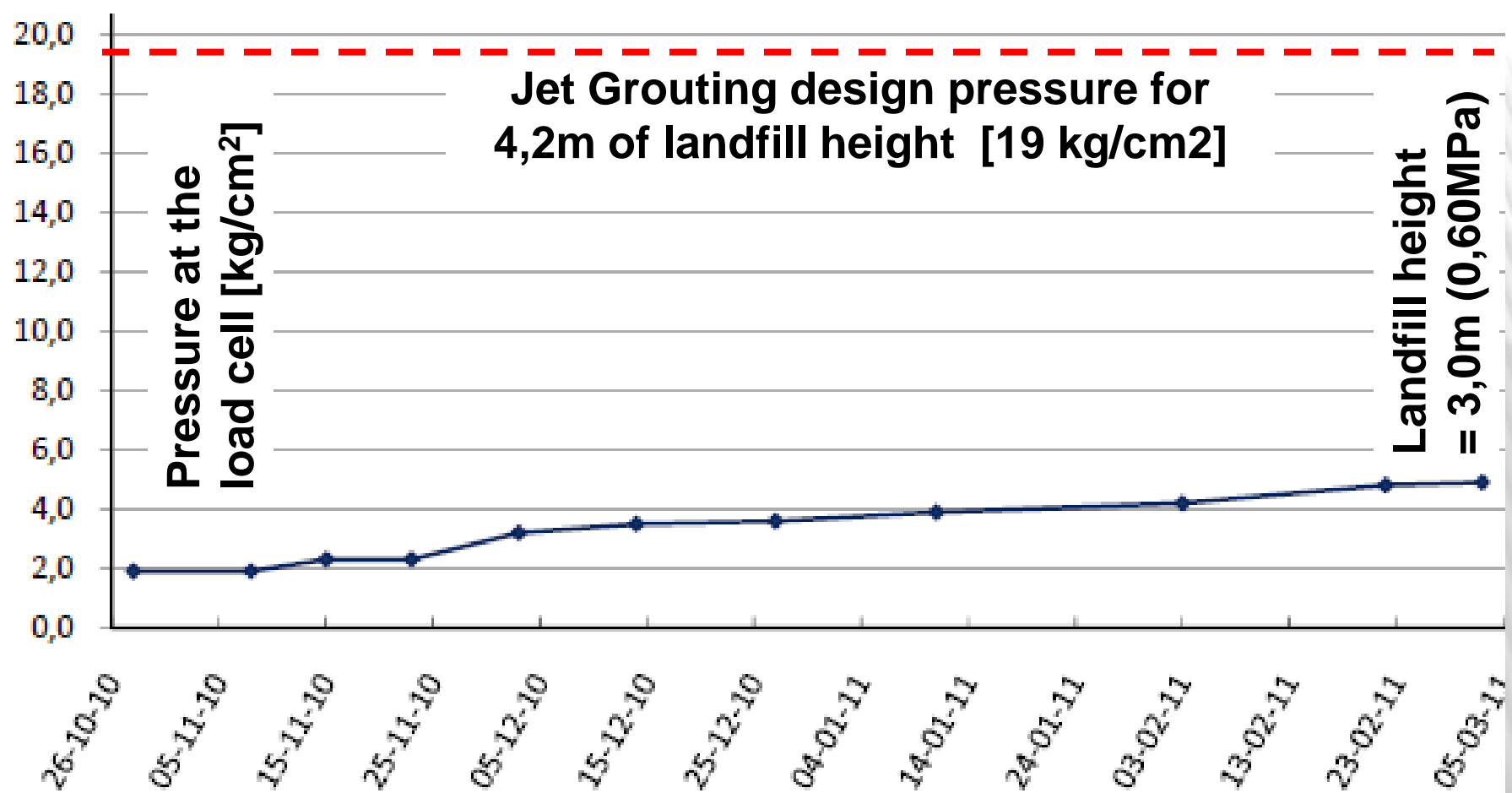
Topographic mark

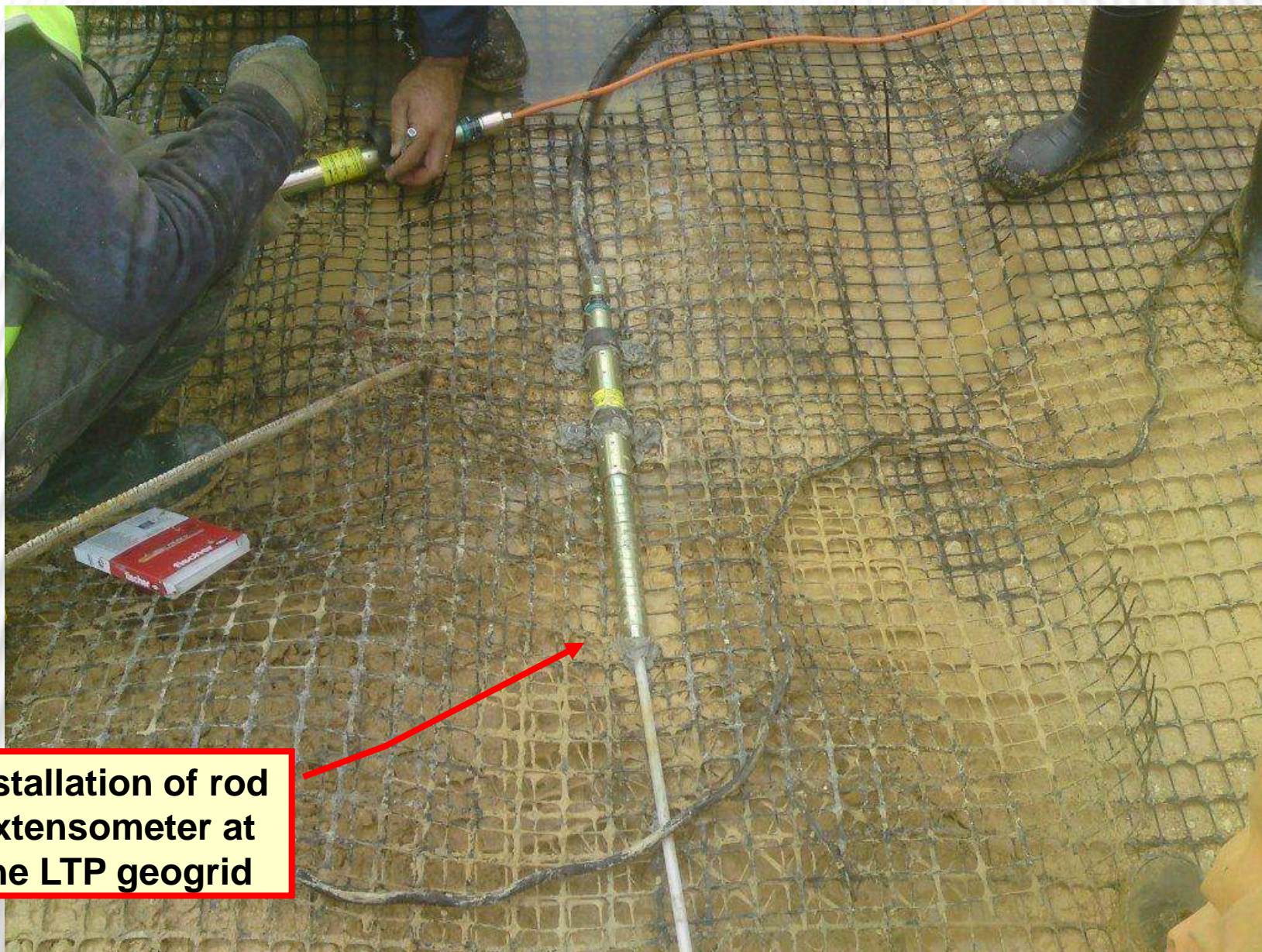
Topographic marks at the landfill base



Vertical displacements at the landfill base [m]







Installation of rod
extensometer at
the LTP geogrid



OUTLINE

- ☐ Introduction
- ☐ Main constraints
- ☐ Quay walls refurbishment and underpinning
- ☐ Landfill foundations
- ☐ Design
- ☐ Monitoring and survey
- ☐ **Quality control / quality assurance**
- ☐ Alternative solutions
- ☐ Conclusion remarks



UCS tests



Cores gathering for UCS tests



Jet grouting columns full length core samples

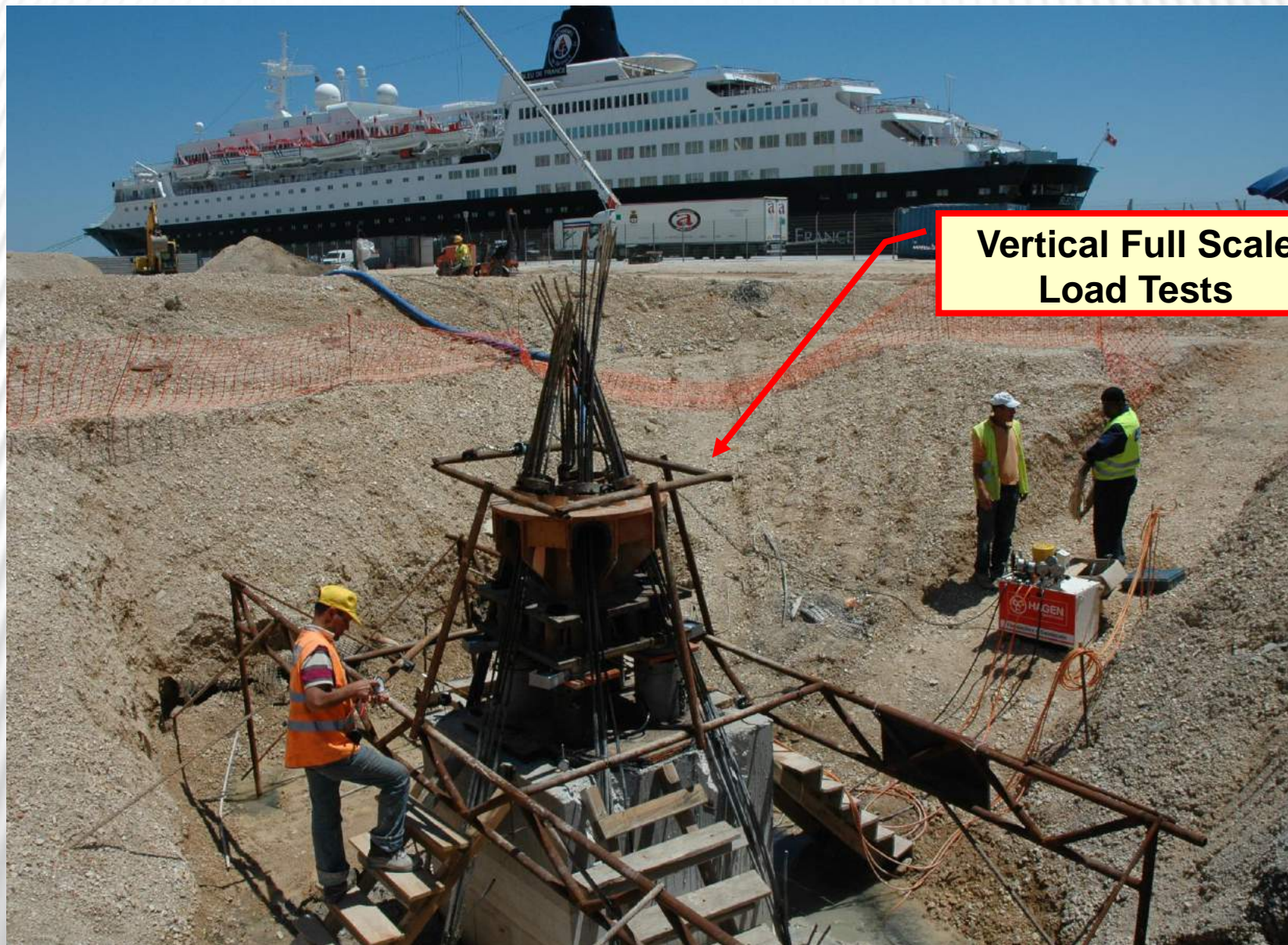


Jet grouting columns core collection

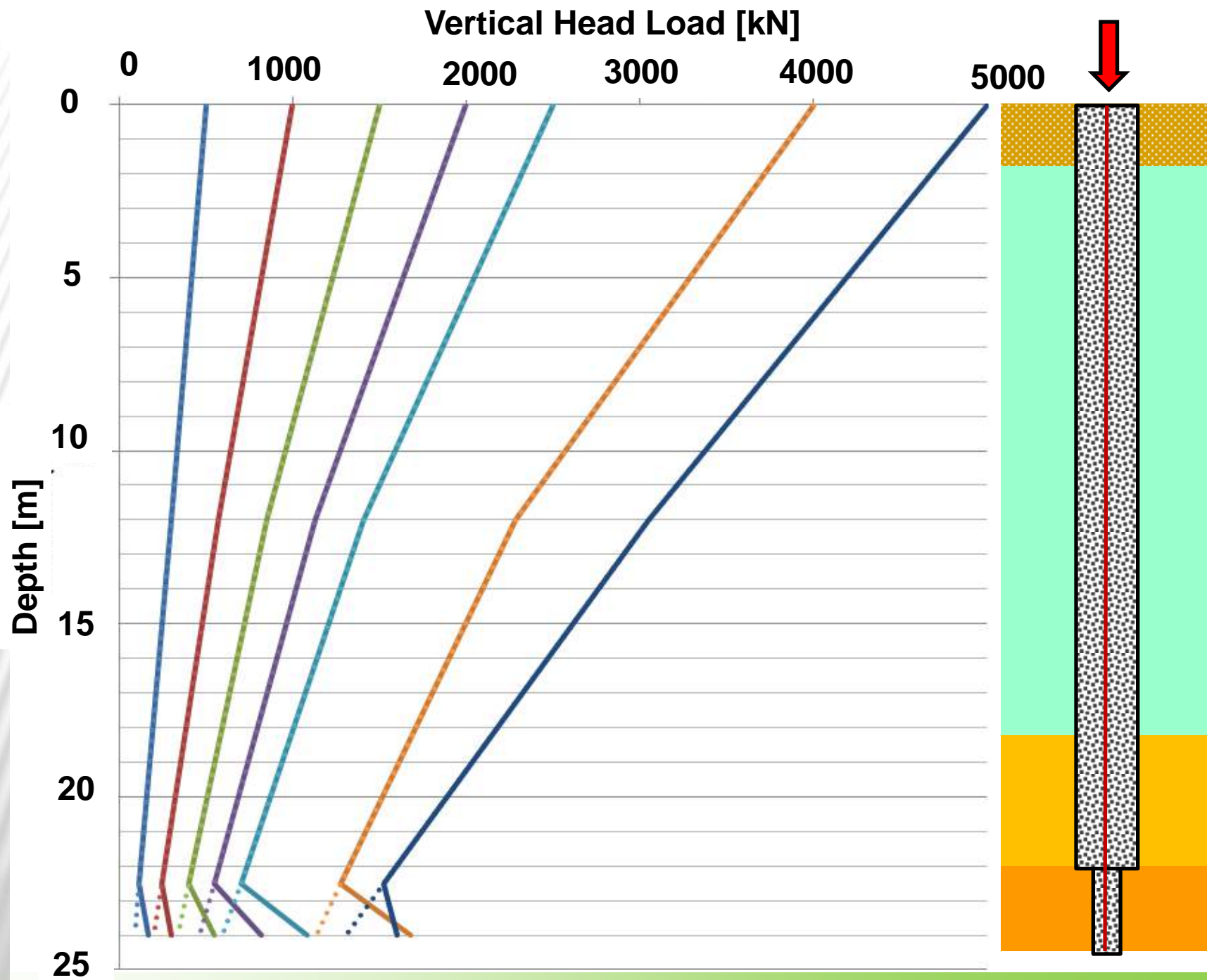


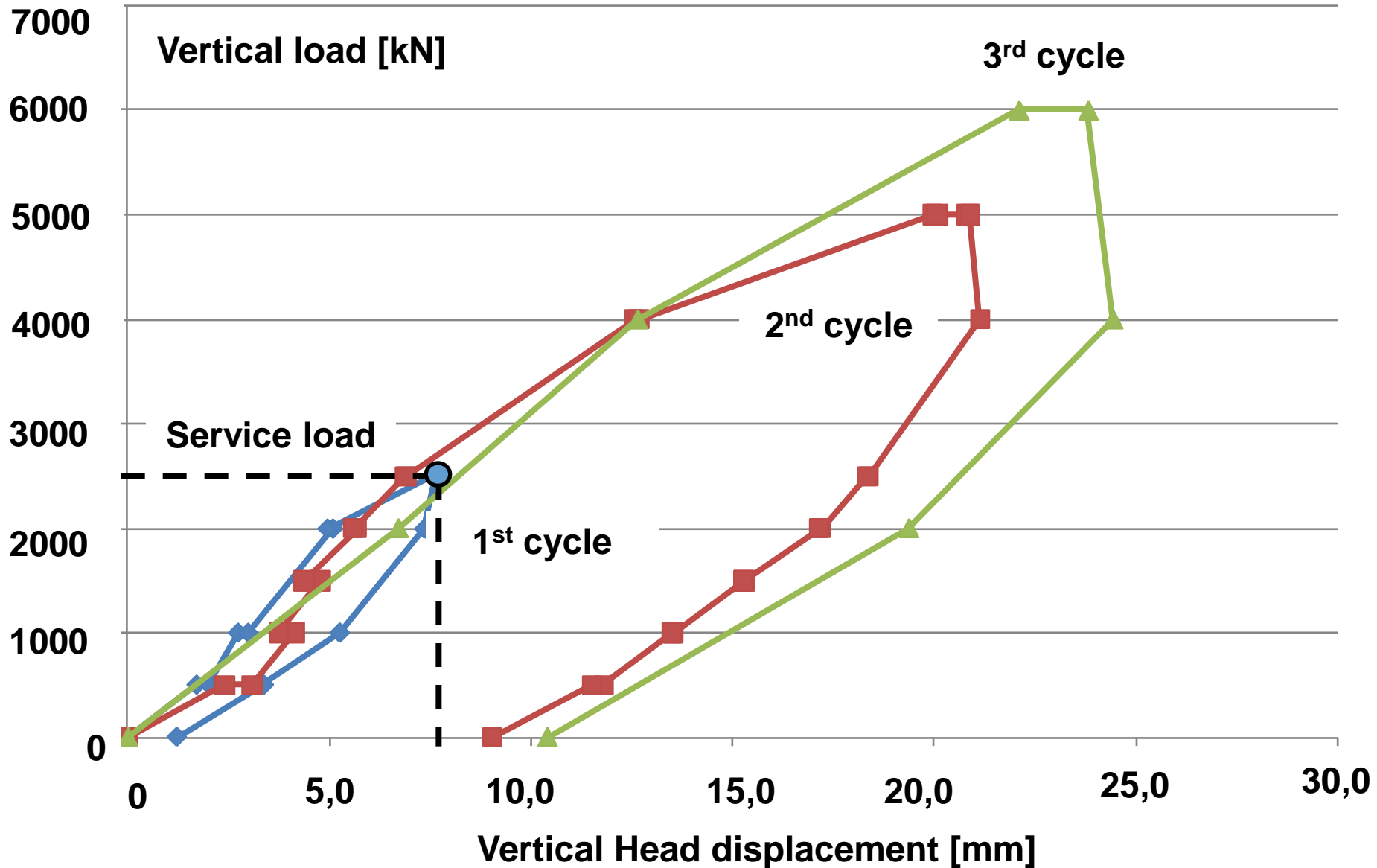
Jet grouting parameters registration

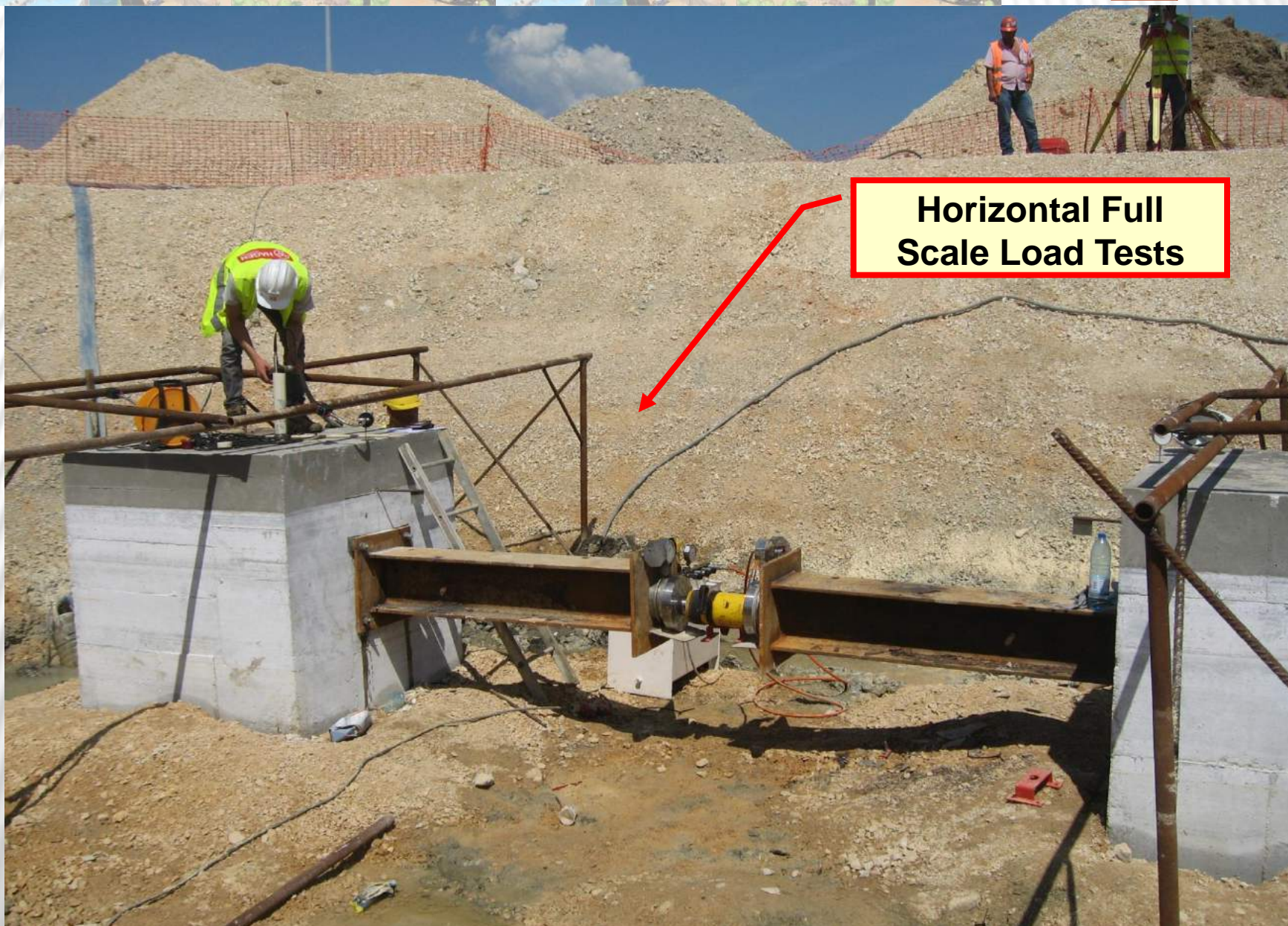




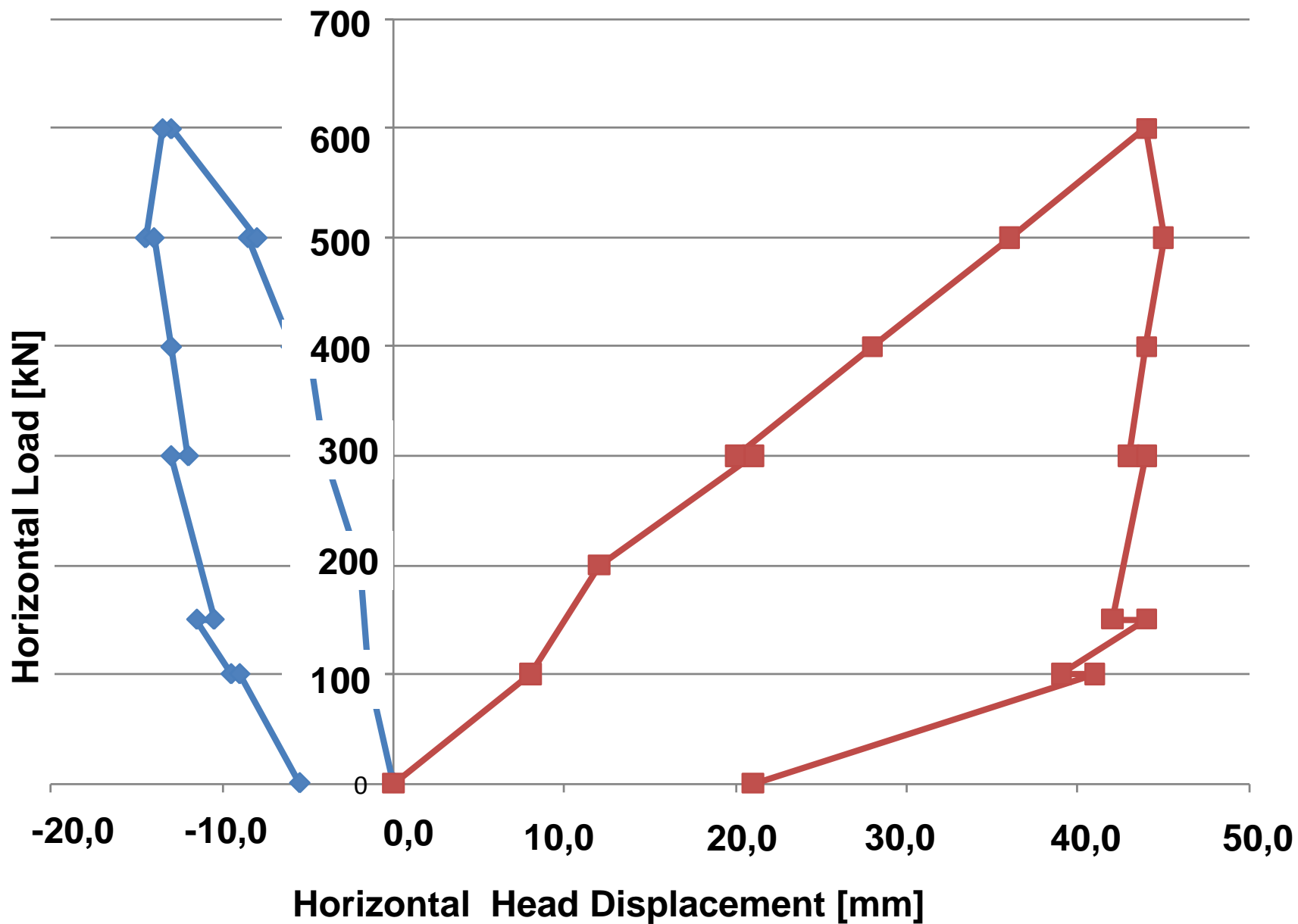
**Vertical Full Scale
Load Tests**

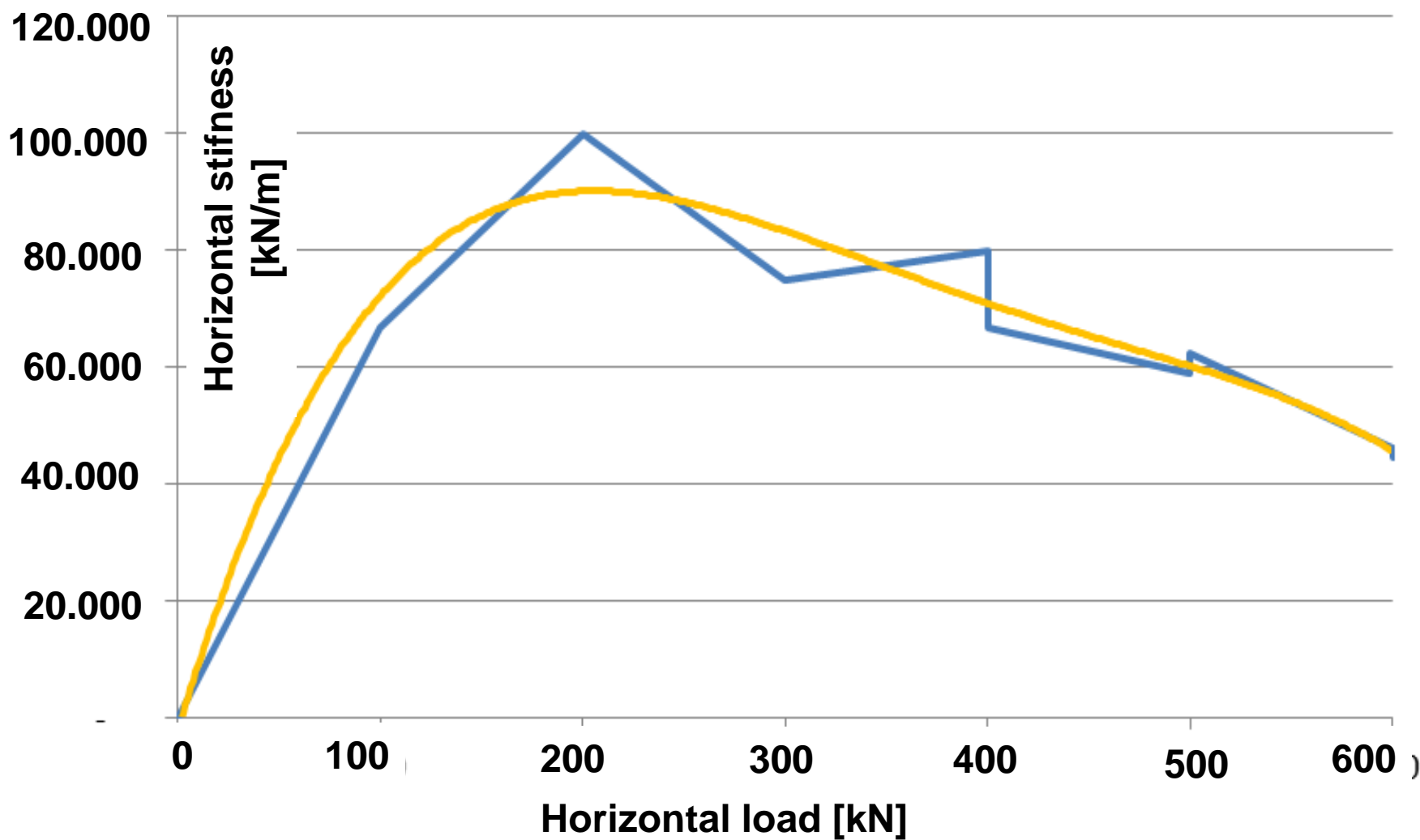






**Horizontal Full
Scale Load Tests**

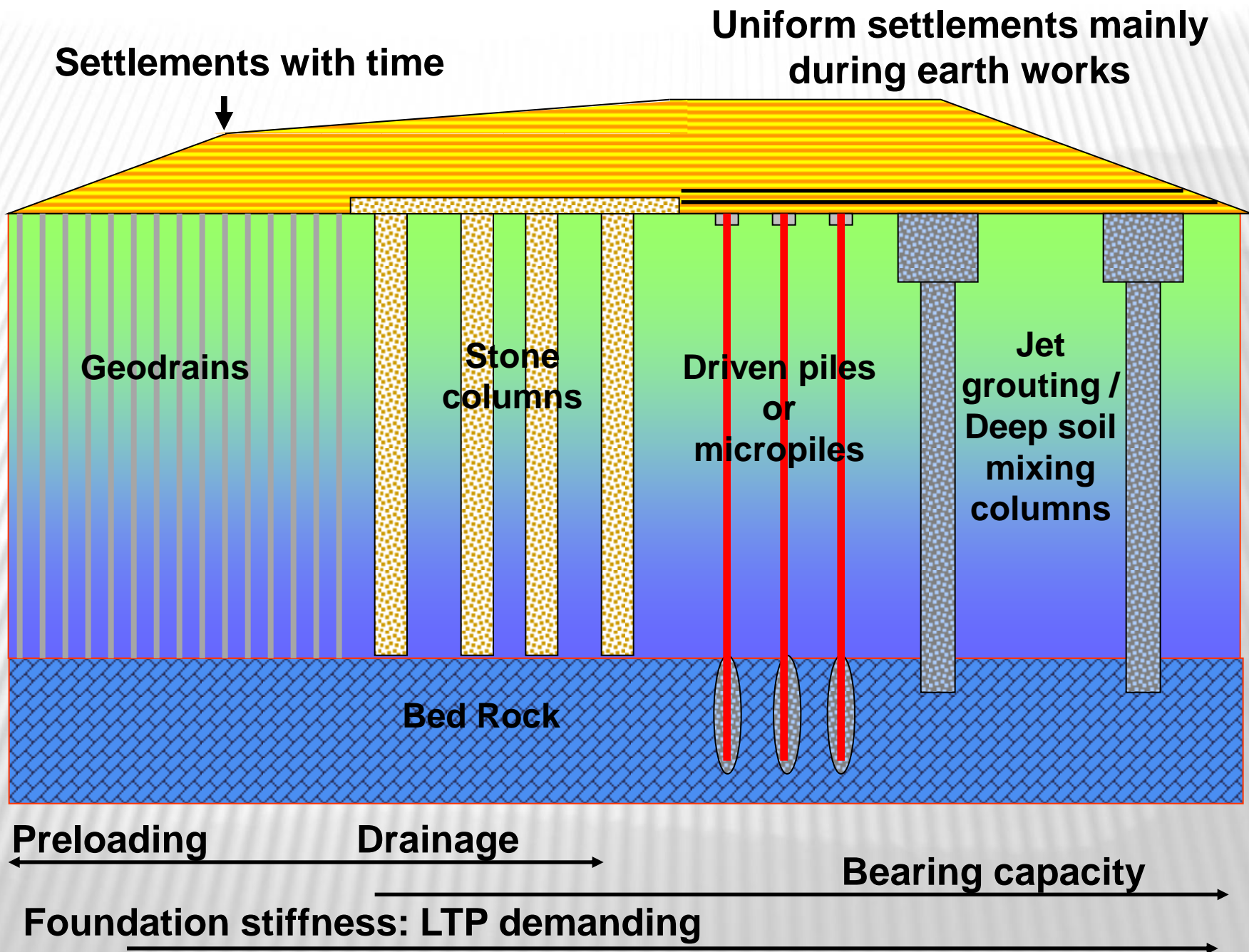






OUTLINE

- ☐ Introduction
- ☐ Main constraints
- ☐ Quay walls refurbishment and underpinning
- ☐ Landfill foundations
- ☐ Design
- ☐ Monitoring and survey
- ☐ Quality control / quality assurance
- ☐ **Alternative solutions**
- ☐ Conclusion remarks





OUTLINE





OUTLINE

- ☐ Introduction
- ☐ Main constraints
- ☐ Quay walls refurbishment and underpinning
- ☐ Landfill foundations
- ☐ Design
- ☐ Monitoring and survey
- ☐ Quality control / quality assurance
- ☐ Alternative solutions
- ☐ **Conclusion remarks**



CONCLUSION REMARKS

BIG VERSATILITY





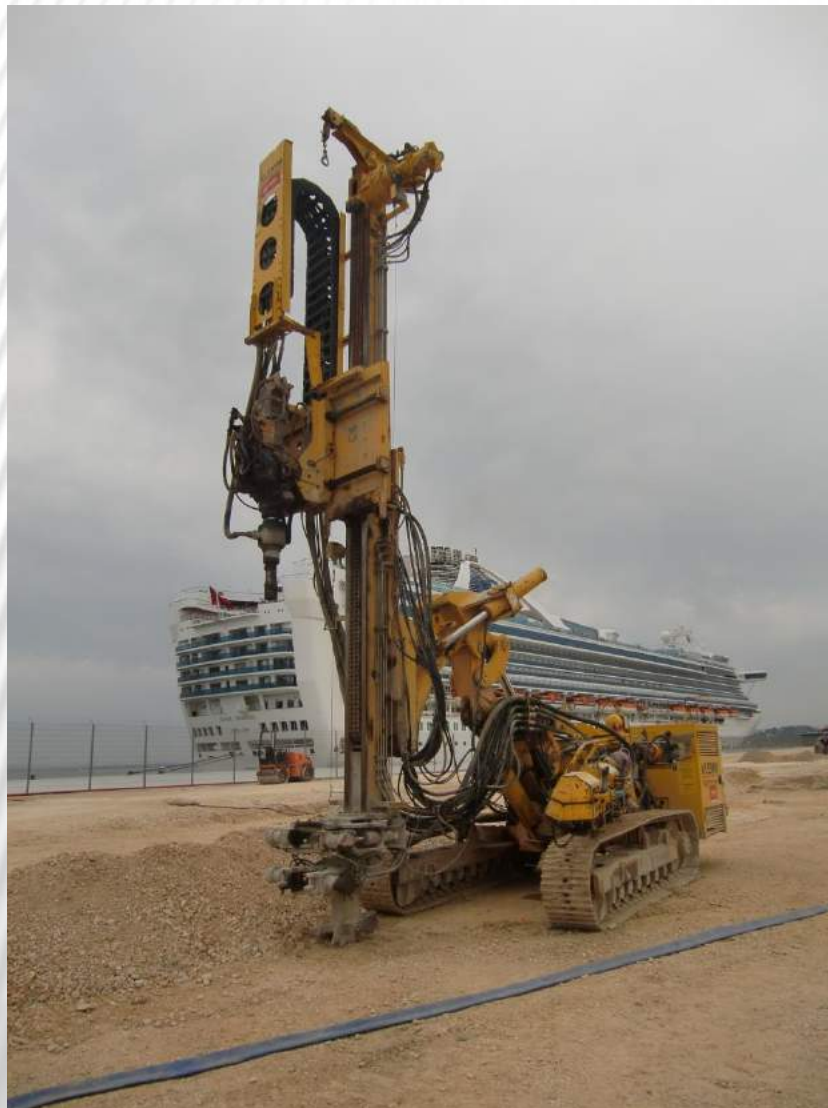
CONCLUSION REMARKS



- ❖ **BIG VERSATILITY**
- ❖ **POSSIBILTY TO REINFORCE
THE COLUMNS WITH STEEL
PROFILES / MICROPILES**



CONCLUSION REMARKS



- ❖ **BIG VERSATILITY**
- ❖ **POSSIBILTY TO REINFORCE THE COLUMNS WITH STEEL PROFILES / MICROPILES**
- ❖ **NO NEED FOR PRELOADING ON SOFT SOILS**



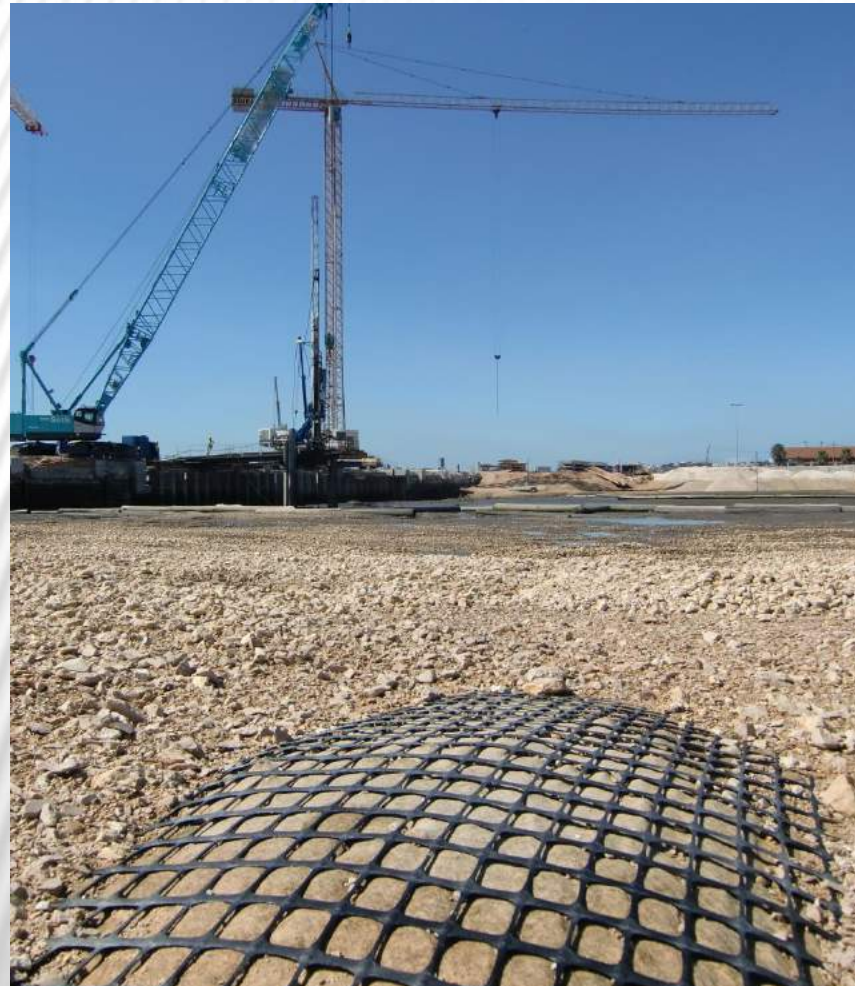
CONCLUSION REMARKS



- ❖ **BIG VERSATILITY**
- ❖ **POSSIBILITY TO REINFORCE THE COLUMNS WITH STEEL PROFILES**
- ❖ **NO NEED FOR PRELOADING ON SOFT SOILS**
- ❖ **ENVIRONMENTAL ADVANTAGES**



CONCLUSION REMARKS



- ❖ **BIG VERSATILITY**
- ❖ **POSSIBILTY TO REINFORCE THE COLUMNS WITH STEEL PROFILES**
- ❖ **NO NEED FOR PRELOADING ON SOFT SOILS**
- ❖ **ENVIRONMENTAL ADVANTAGES**
- ❖ **CONFINEMENT EFFECT ON SOFT SOILS**



CONCLUSION REMARKS



- ❖ **BIG VERSATILITY**
- ❖ **POSSIBILTY TO REINFORCE THE COLUMNS WITH STEEL PROFILES**
- ❖ **NO NEED FOR PRELOADING ON SOFT SOILS**
- ❖ **ENVIRONMENTAL ADVANTAGES**
- ❖ **CONFINEMENT EFFECT ON SOFT SOILS**
- ❖ **EXECUTION CONTROL: QC / QA**



THANK YOU FOR YOUR ATTENTION

www.jetsj.pt